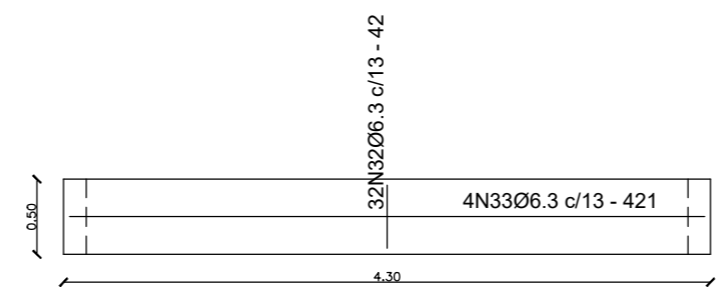
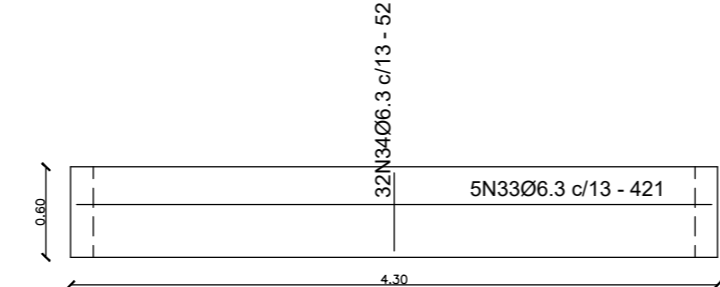


ARMADURAS FUNDO FOSSA SÉPTICA  
ESCALA: 1/25



PLACA A  
ESCALA: 1/25



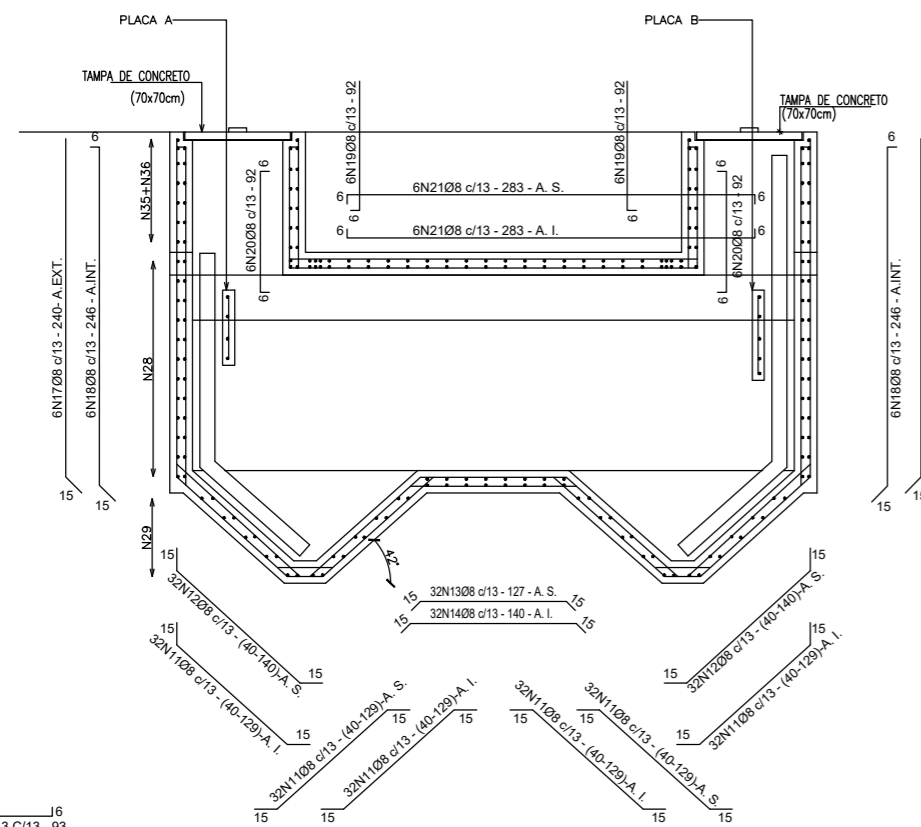
PLACA B  
ESCALA: 1/25

A. S. - ARMADURA SUPERIOR  
A. I. - ARMADURA INFERIOR  
A. EXT. - ARMADURA EXTERNA  
A. INT. - ARMADURA INTERNA

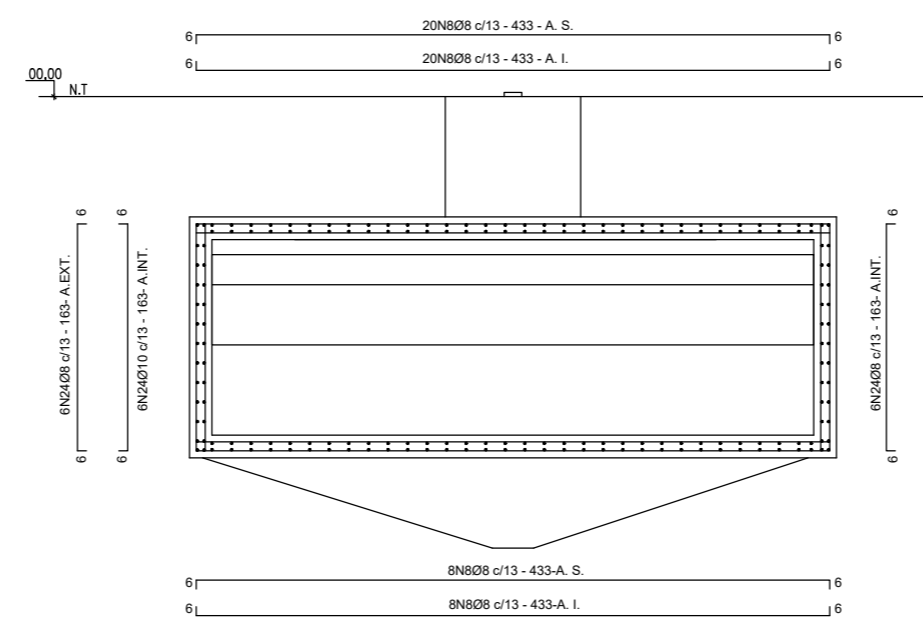
TABELA COMPRIMENTO AÇO - FOSSA SÉPTICA

Pos.	Diam.	Q.	Comp. (cm)	Aço
N1	---	---	---	---
N2	Ø10	16	105	---
N3	Ø10	8	125	---
N4	---	---	---	---
N5	---	---	---	---
N6	---	---	---	---
N7	---	---	---	---
N8	Ø8	108	433	---
N9	Ø8	48	VAR.	---
N10	Ø8	48	VAR.	---
N11	Ø8	192	VAR.	---
N12	Ø8	64	VAR.	---
N13	Ø8	32	127	---
N14	Ø8	32	140	---
N15	---	---	---	---
N16	---	---	---	---
N17	Ø8	12	240	---
N18	Ø8	12	246	---
N19	Ø8	44	92	---
N20	Ø8	36	92	---
N21	Ø8	12	283	---
N22	---	---	---	---
N23	---	---	---	---
N24	Ø8	132	163	---
N25	Ø8	48	188	---
N26	---	---	---	---
N27	---	---	---	---
N28	Ø6.3	96	433	---
N29	Ø6.3	40	VAR.	---
N30	---	---	---	---
N31	---	---	---	---
N32	Ø6.3	32	42	---
N33	Ø6.3	9	421	---
N34	Ø6.3	32	52	---
N35	Ø6.3	48	93	---
N36	Ø6.3	14	334	---
N37	---	---	---	---
N38	---	---	---	---
N39	Ø6.3	12	286	---

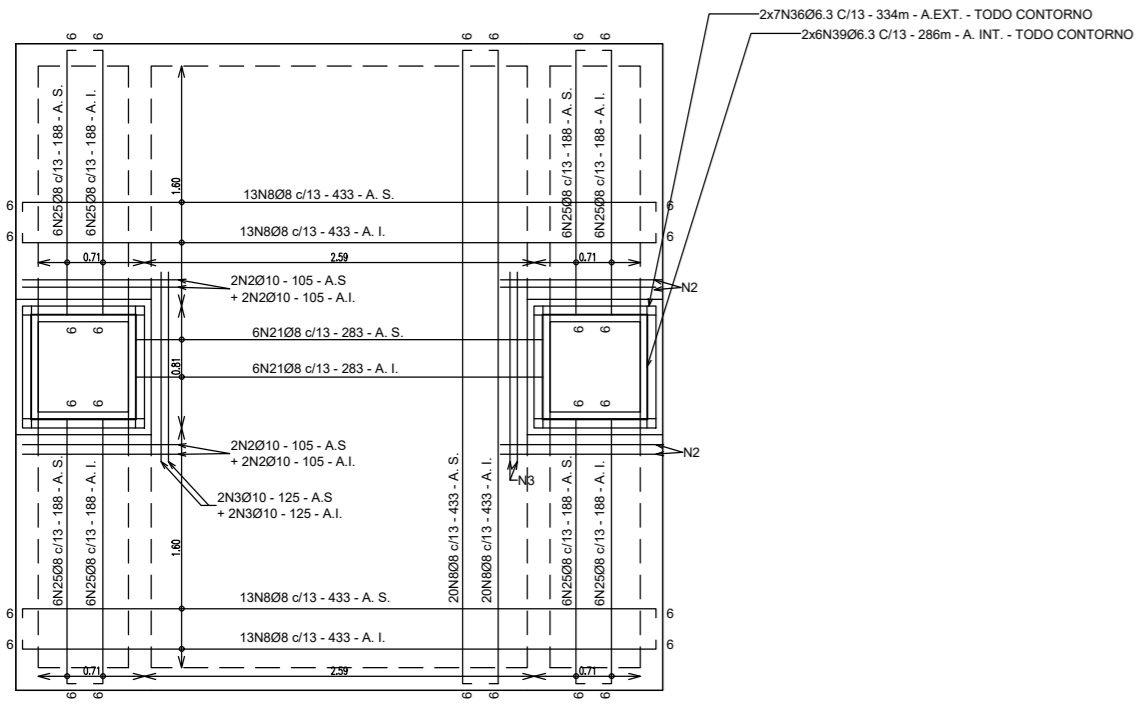
CA-50



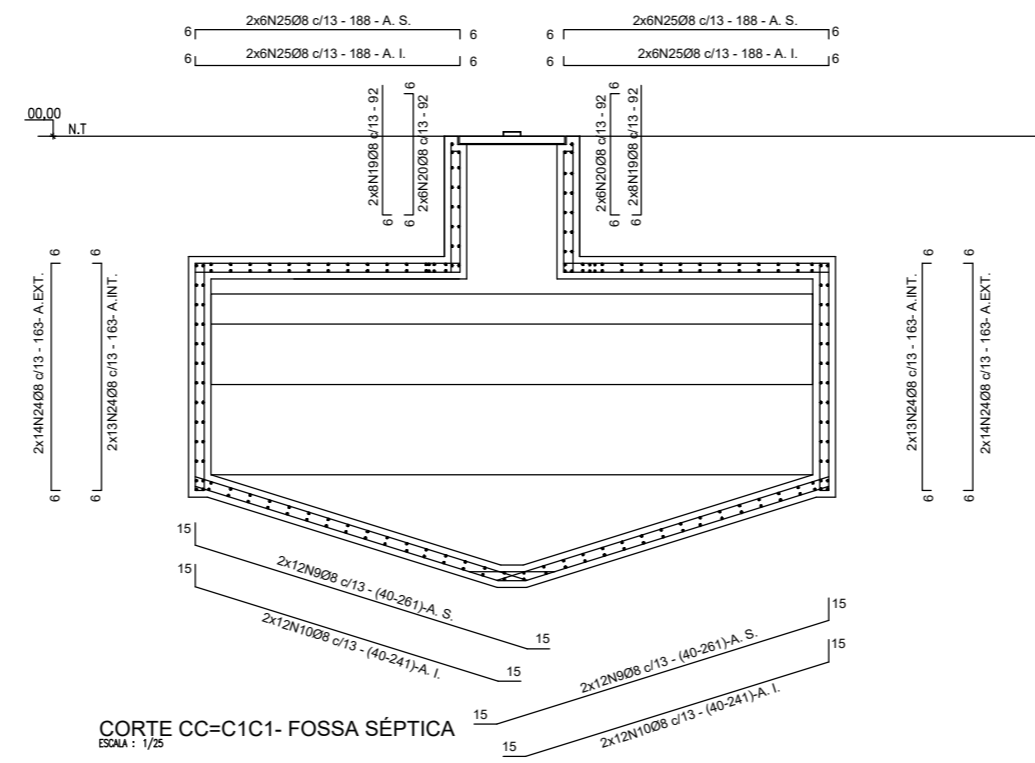
ARMADURAS CORTE AA- FOSSA SÉPTICA  
ESCALA: 1/25



CORTE BB- FOSSA SÉPTICA  
ESCALA: 1/25



TAMPA FOSSA SÉPTICA  
ESCALA: 1/25



CORTE CC=C1C1- FOSSA SÉPTICA  
ESCALA: 1/25

RESUMO GERAL +8%

Ø	COMP. TOTAL (m)	PESO (kg)	AÇO
10	26.80	18	Ø 6.3
8.0	1383.88	590	
6.3	646.37	171	
PESO TOTAL		779 Kg	

- 1) Fck = 30MPa;
- 2) Fator água/cimento máximo = 0,55;
- 3) Aço CA 50;
- 4) Cobrimento mínimo para as peças = 4,5cm;

**FNDE** Fundação Nacional de Desenvolvimento da Educação  
Ministério da Educação

**IF** INSTITUTO FEDERAL DE EDUCAÇÃO, CIÊNCIA E TECNOLOGIA ALAGOAS

ENDEREÇO: \_\_\_\_\_  
MUNICÍPIO - UF: VIÇOSA  
PROPRIETÁRIO: INSTITUTO FEDERAL DE ALAGOAS  
AUTORES DO PROJETO: ENG. EDJA LAURINDO DA SILVA - R.N. nº 0203782-2 - CREA/AL  
RESPONSÁVEL TÉCNICO: \_\_\_\_\_

RESUMO GERAL +8%

Ø	COMP. TOTAL (m)	PESO (kg)	AÇO
10	26.80	18	Ø 6.3
8.0	1383.88	590	
6.3	646.37	171	
PESO TOTAL		779 Kg	

PROJETO EXECUTIVO

COORDENAÇÃO	DESCRIÇÃO	PROJETO Nº/01
COBET - Coordenadoria Geral de Infra-estrutura FNDE	DETALHAMENTO ARMADURAS FOSSA SÉPTICA	
ÁREA DO TERRENO: 5,071 ha	REVISÃO: R-00	ESCALA: 1:25
ÁREA CONSTRUIDA: 5,57739m²	DATA EMISSÃO: ABRIL 2014	FRANCHA: _____
DESENHO: EDJA		23