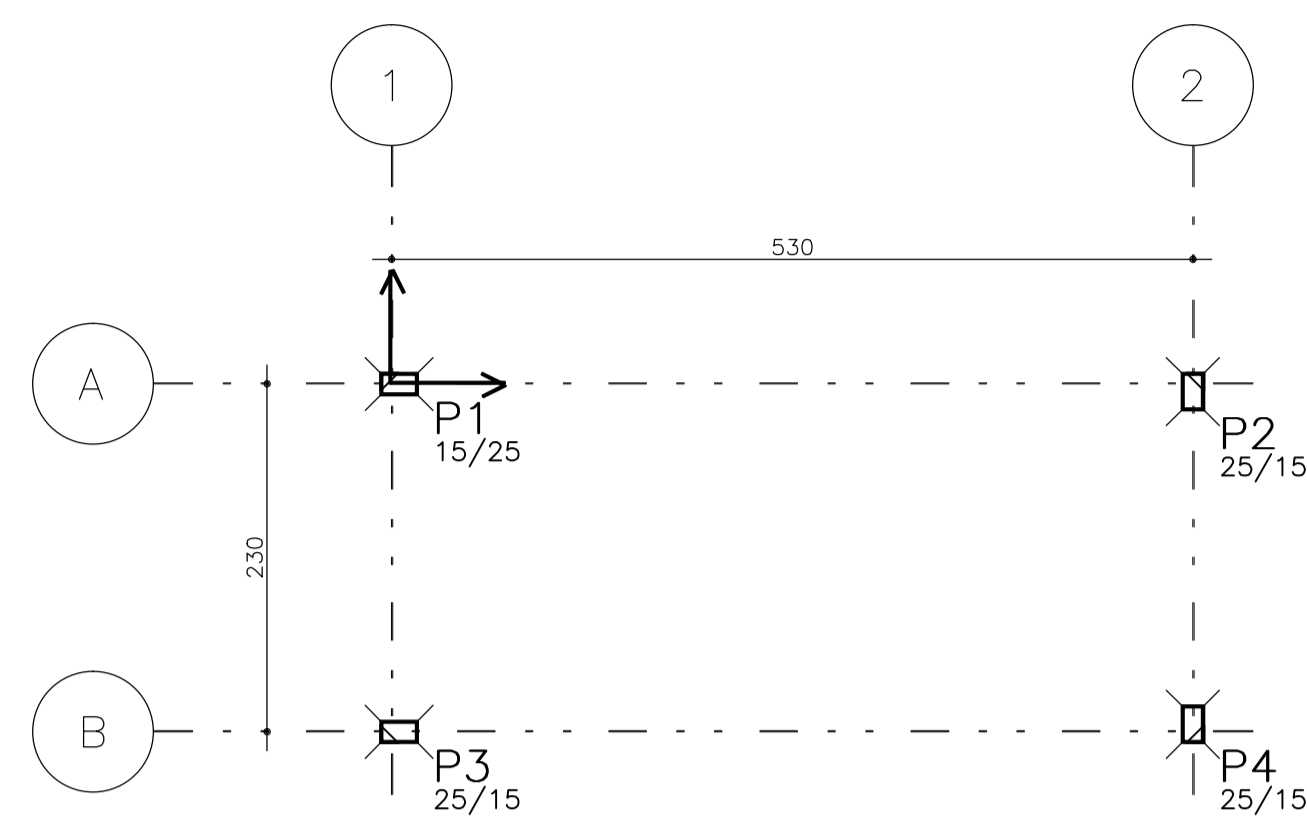


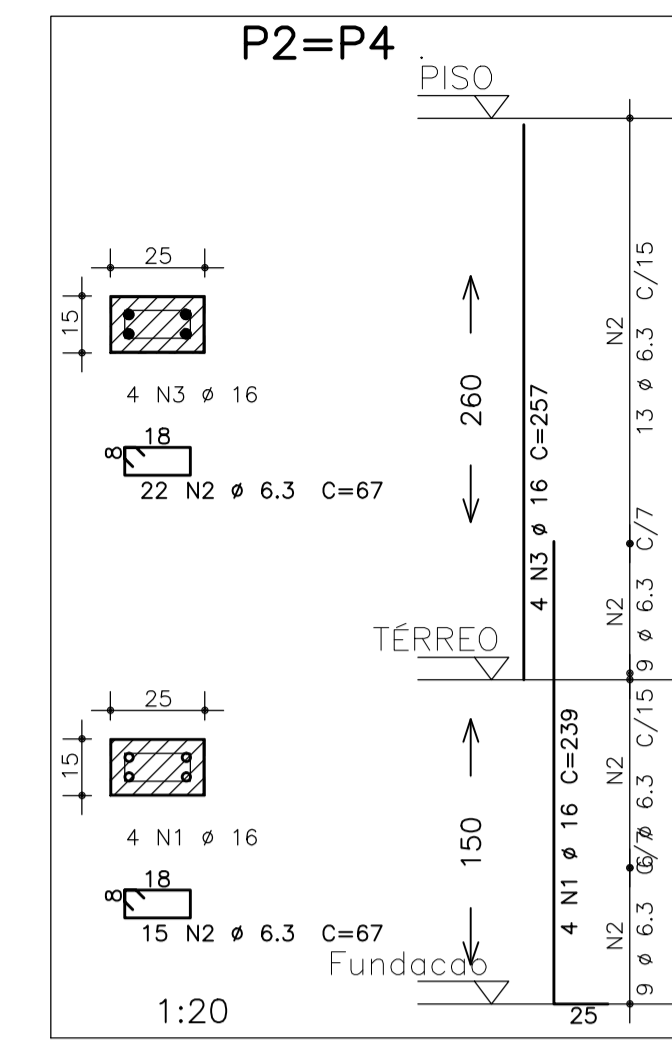
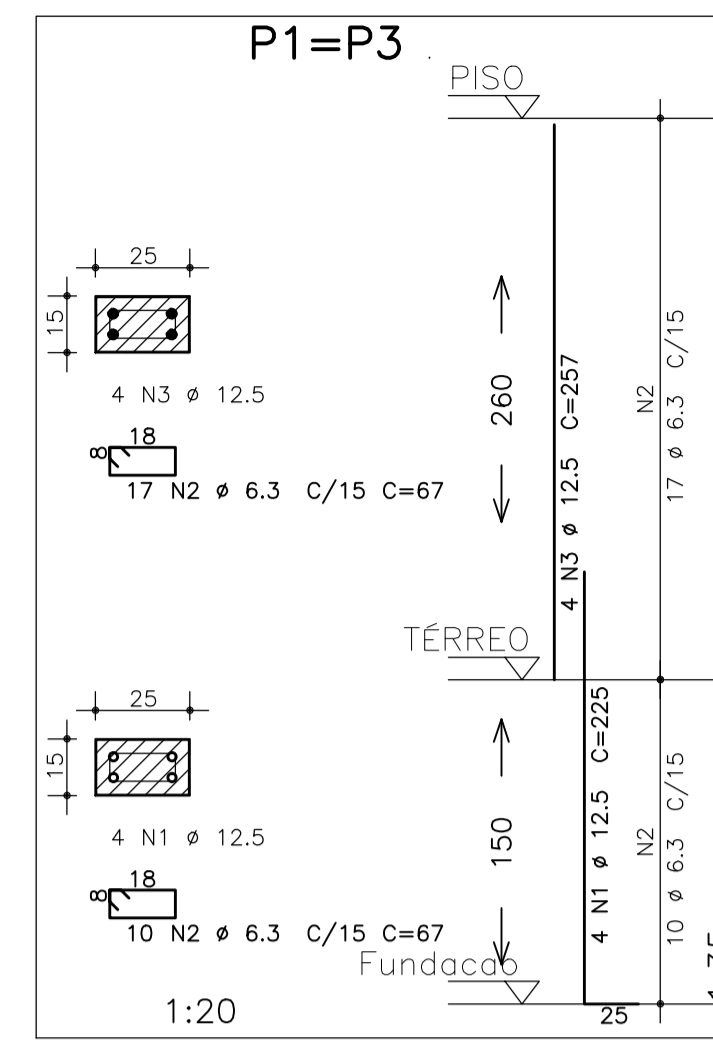
# LOCAÇÃO DOS PILARES.

Esc.: 1/50



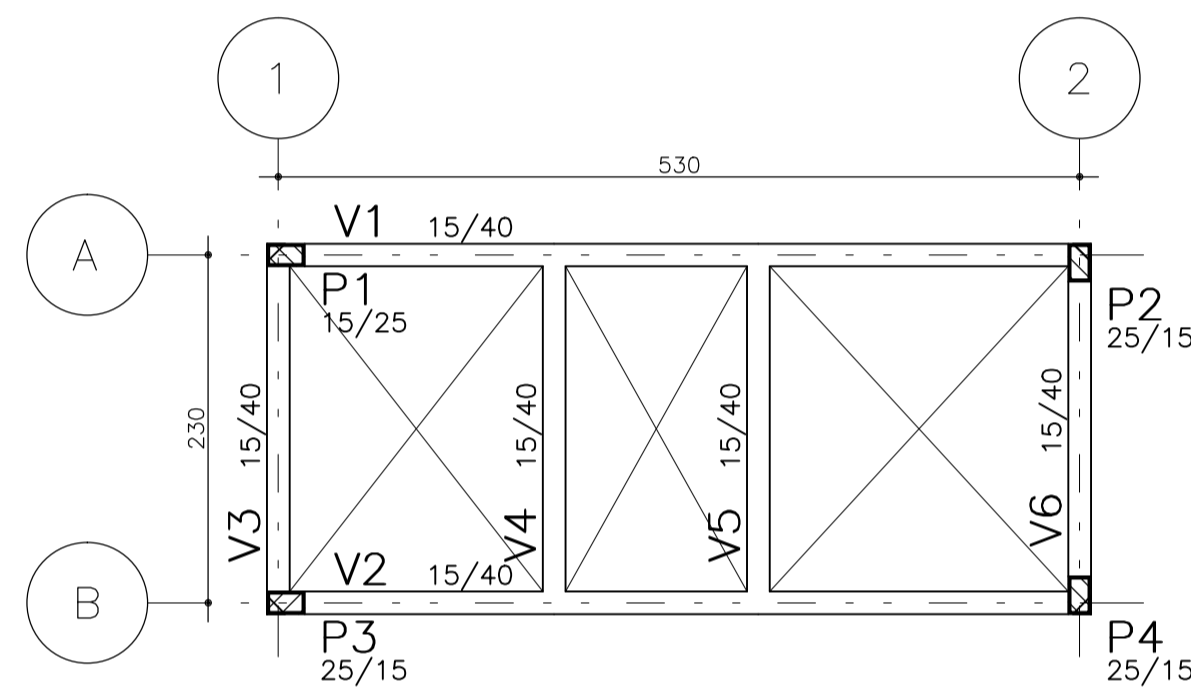
REAÇÕES (ton; m.ton)					
PILARES	Fz	Fx	Fy	Mx	My
P1	6,8	1,2	0,8	0,7	0,7
P2	6,8	1,0	0,8	0,9	0,7
P3	6,7	1,2	0,8	0,7	0,7
P4	6,7	1,0	0,8	0,9	0,7

Baricentros de pilares		
Pilar	X (cm)	Y (cm)
P1	5,0	0,0
P2	530,0	-5,0
P3	5,0	-230,0
P4	530,0	-225,0

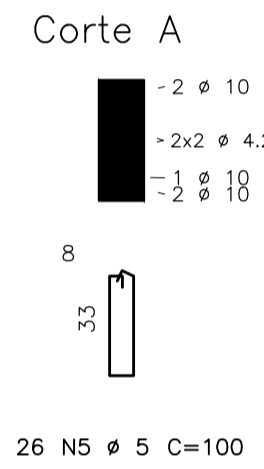
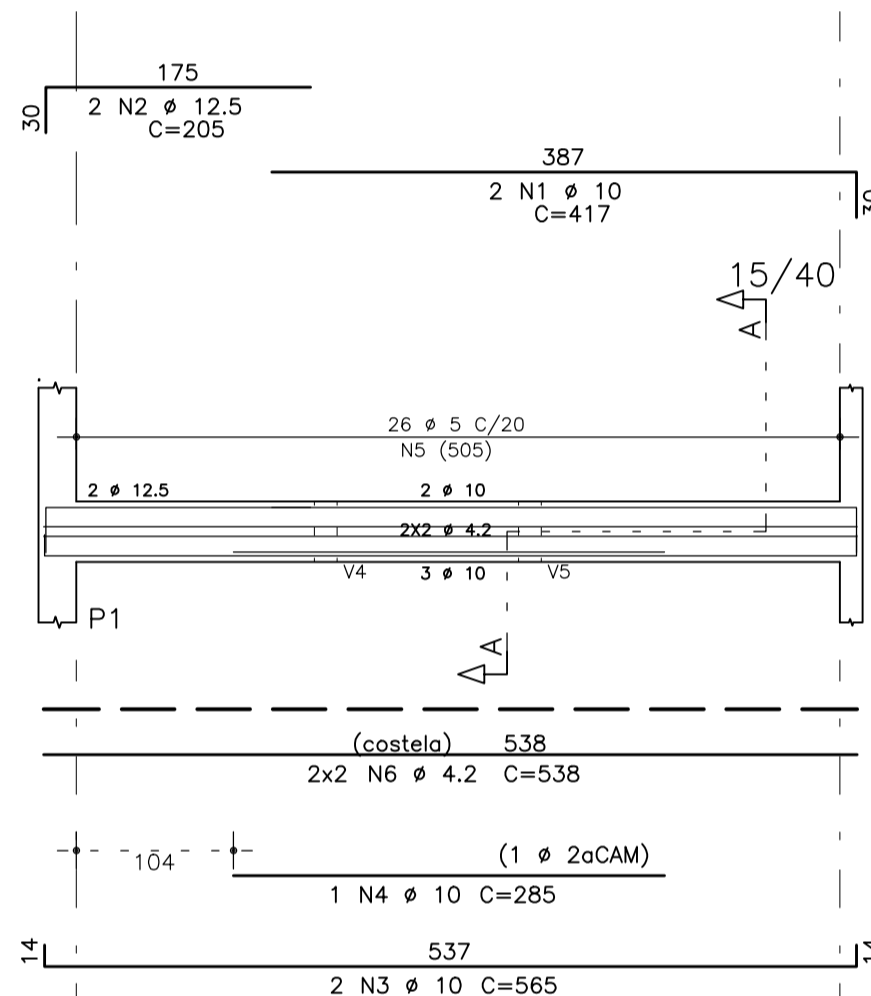


# FÔRMA DO CINTAMENTO.

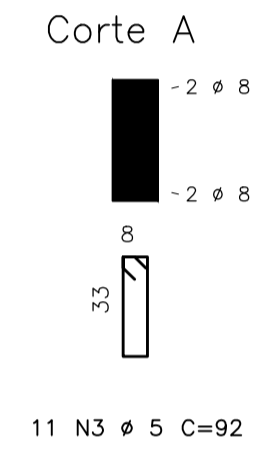
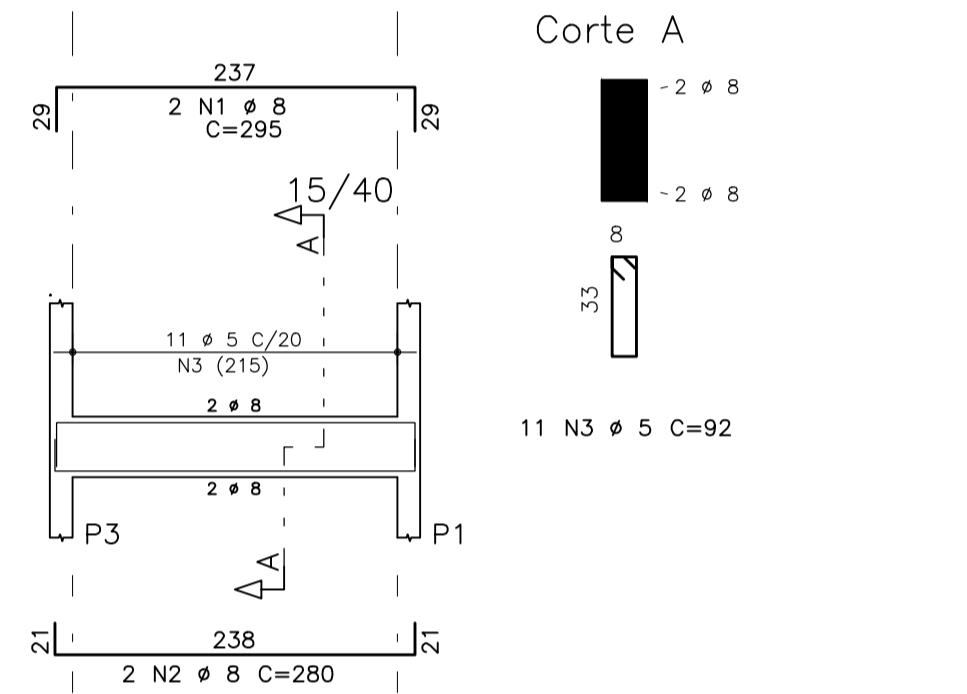
Esc.: 1/50



# V1=V2 (CINTAMENTO)



# V3 a V6 (CINTAMENTO)



	AÇO	POS	BIT (mm)	QUANT	COMPIMENTO (cm)	UNIT (cm)	TOTAL (cm)
P1=P3 (X2)	50A	1	12,5	8	225	1800	
	50A	2	6,3	54	67	3618	
	50A	3	12,5	8	257	2056	
P2=P4 (X2)	50A	1	16	8	239	1912	
	50A	2	6,3	74	67	4958	
	50A	3	16	8	257	2056	
ARMAÇÃO NEGATIVA - FORRO	50A	1	6,3	4	125	500	
	50A	2	6,3	23	90	2070	
	60B	3	5	1	-CORR-	1281	
	60B	4	5	1	-CORR-	1542	
	60B	5	5	1	-CORR-	1652	
	50A	6	6,3	6	90	540	
	50A	7	6,3	6	105	630	
ARMAÇÃO POSITIVA - FORRO	50A	1	6,3	11	547	6017	
	50A	2	6,3	26	245	6370	
	50A	3	6,3	11	547	6017	
V1=V2 (CINTAMENTO) (X2)	50A	1	10	4	417	1668	
	50A	2	12,5	4	205	820	
	50A	3	10	4	565	2260	
	50A	4	10	2	285	570	
	60B	5	5	52	100	5200	
	60B	6	4,2	8	538	4304	
V1=V2 (FORRO) (X2)	50A	1	10	4	596	2384	
	50A	2	10	4	565	2260	
	50A	3	10	2	325	650	
	60B	4	5	52	97	5044	
V3 a V6 (CINTAMENTO) (X4)	50A	1	8	8	295	2360	
	50A	2	8	8	280	2240	
	60B	3	5	44	92	4048	
V3=V4 (FORRO) (X2)	50A	1	10	4	297	1188	
	50A	2	10	4	298	1192	
	60B	3	5	22	97	2134	
	60B	4	4,2	8	238	1904	

RESUMO AÇO CA 50-60			
AÇO	BIT (mm)	COMPR (m)	PESO (kg)
60B	4,2	105	11
60B	5	209	33
50A	6,3	247	62
50A	8	46	18
50A	10	122	77
50A	12,5	47	47
50A	16	40	63
Peso Total		60B =	45 kg
Peso Total		50A =	267 kg

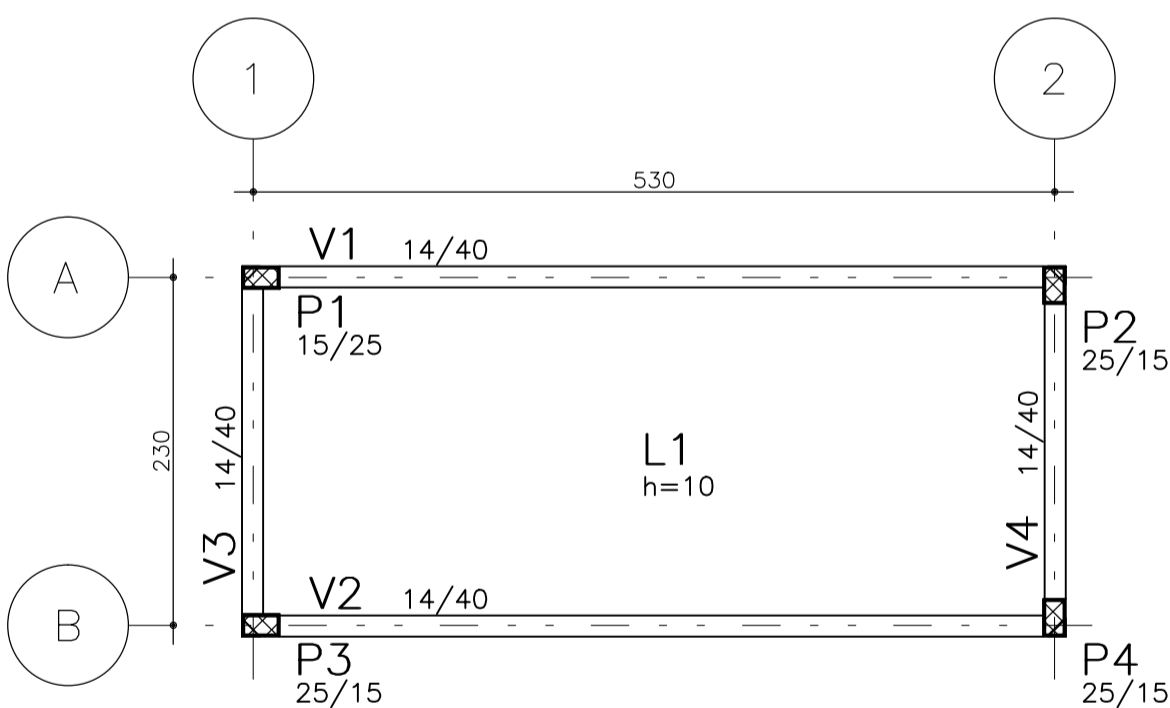
02	-	-	-
01	-	-	-
00	JM	EMISSÃO INICIAL	11/02/2011
REVISÃO	RESPONSÁVEL	ASSUNTO	DATA

**FNDE** Fundo Nacional de Desenvolvimento da Educação  
**T.ã.c.i.ã** da O.ã.ã.ã.ã.  
**INSTITUTO FEDERAL DE EDUCAÇÃO, CIÊNCIA E TECNOLOGIA ALAGOAS**

02	-	-	-
01	-	-	-
00	JM	EMISSÃO INICIAL	11/02/2011
REVISÃO	RESPONSÁVEL	ASSUNTO	DATA

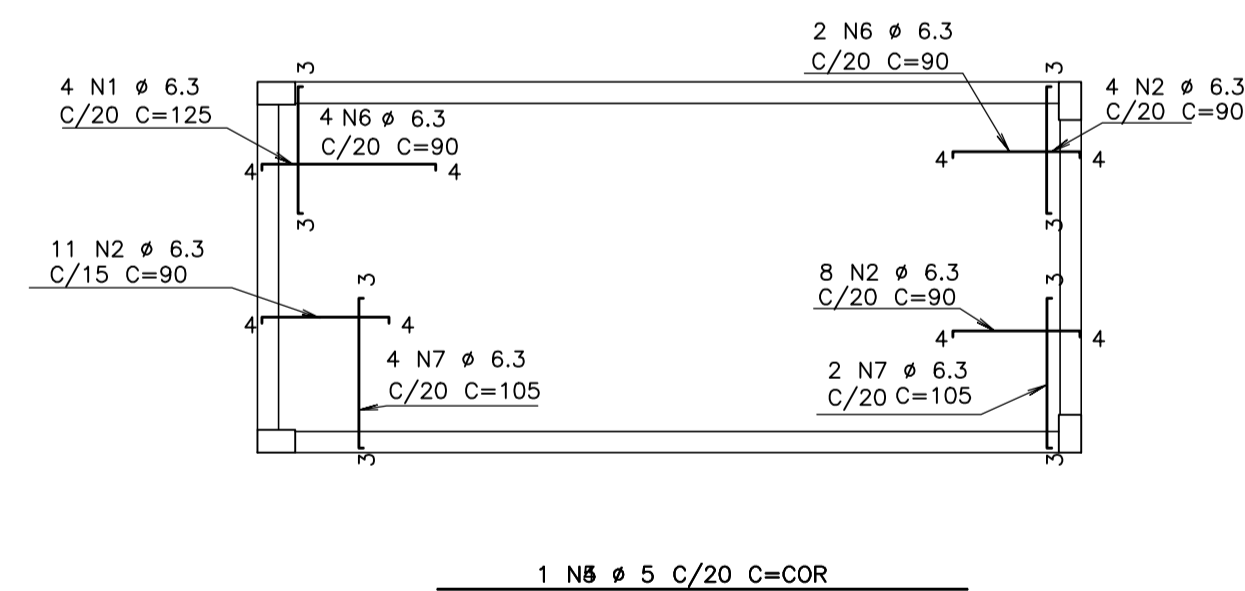
# FÔRMA DO FORRO.

Esc.: 1/50

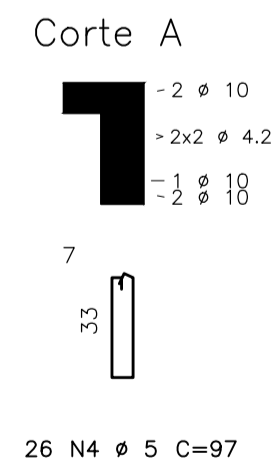
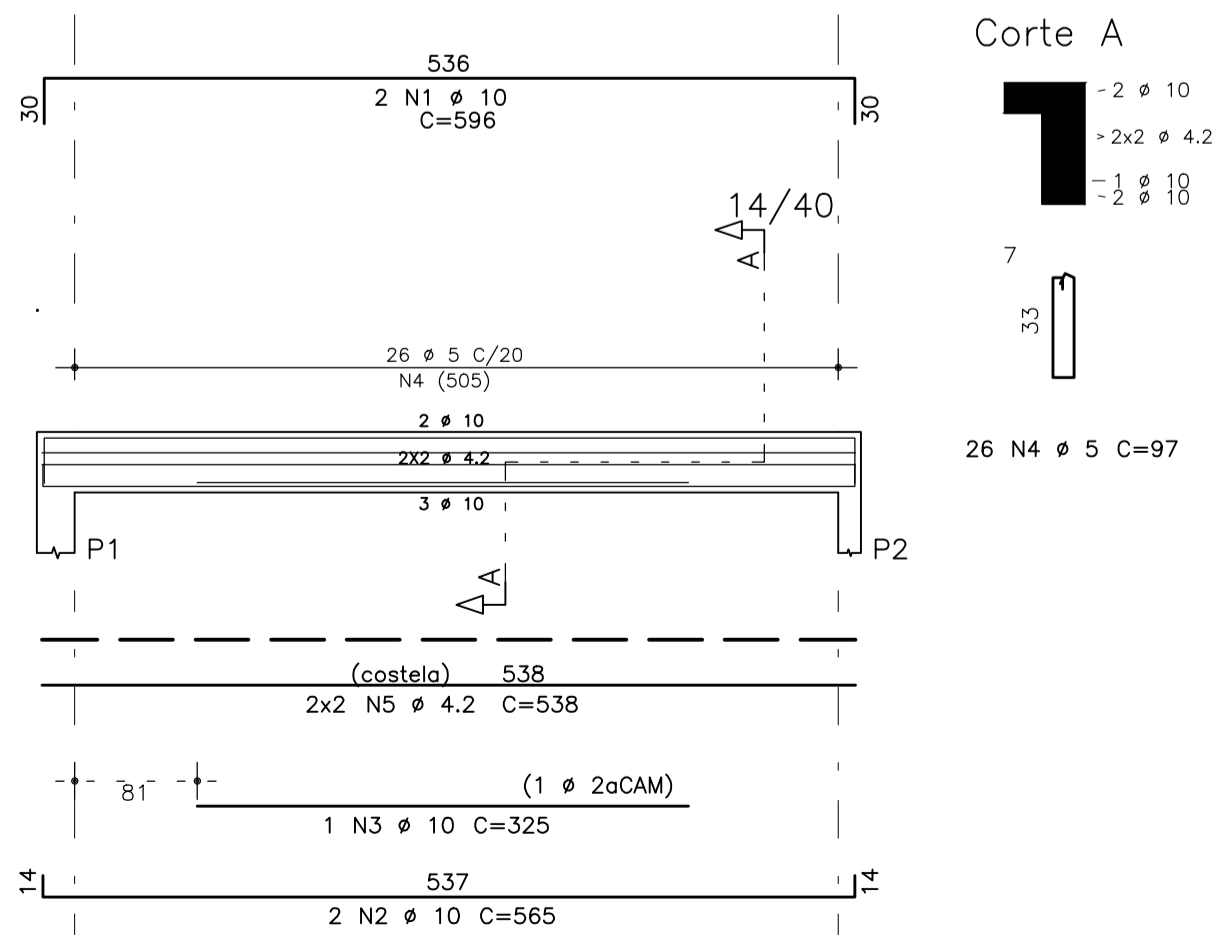


# ARMAÇÃO NEGATIVA - FORRO.

Esc.: 1/50

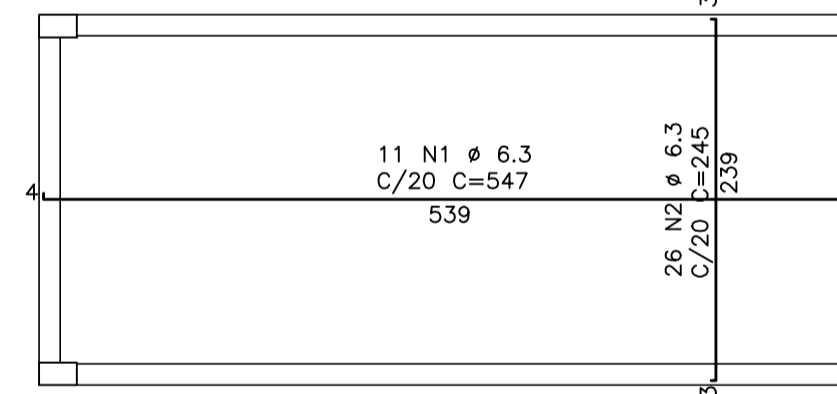


# V1=V2 (FORRO)

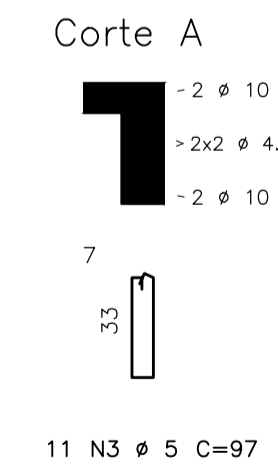
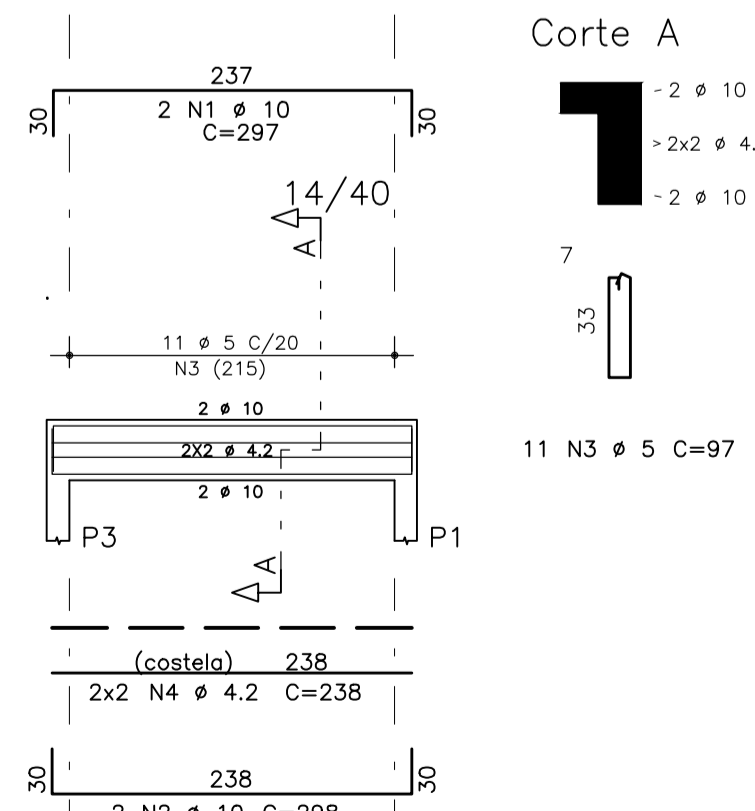


# ARMAÇÃO POSITIVA - FORRO.

Esc.: 1/50



# V3=V4 (FORRO)



PROJETO EXECUTIVO	
ESTRUTURA DE CONCRETO ARMADO	PROJETO 04.01
GUARITA	FORMA E ARM. DA GUARITA
5,071 ha	5,071 ha
INDICADA	INDICADA
SETEMBRO/2011	SETEMBRO/2011
FRANCHA	59/61