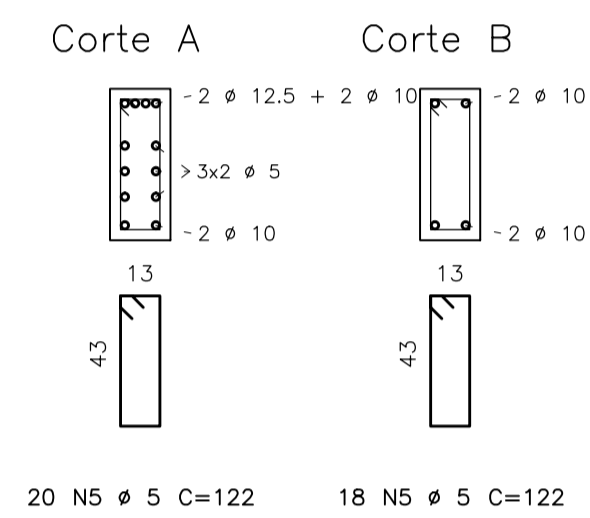
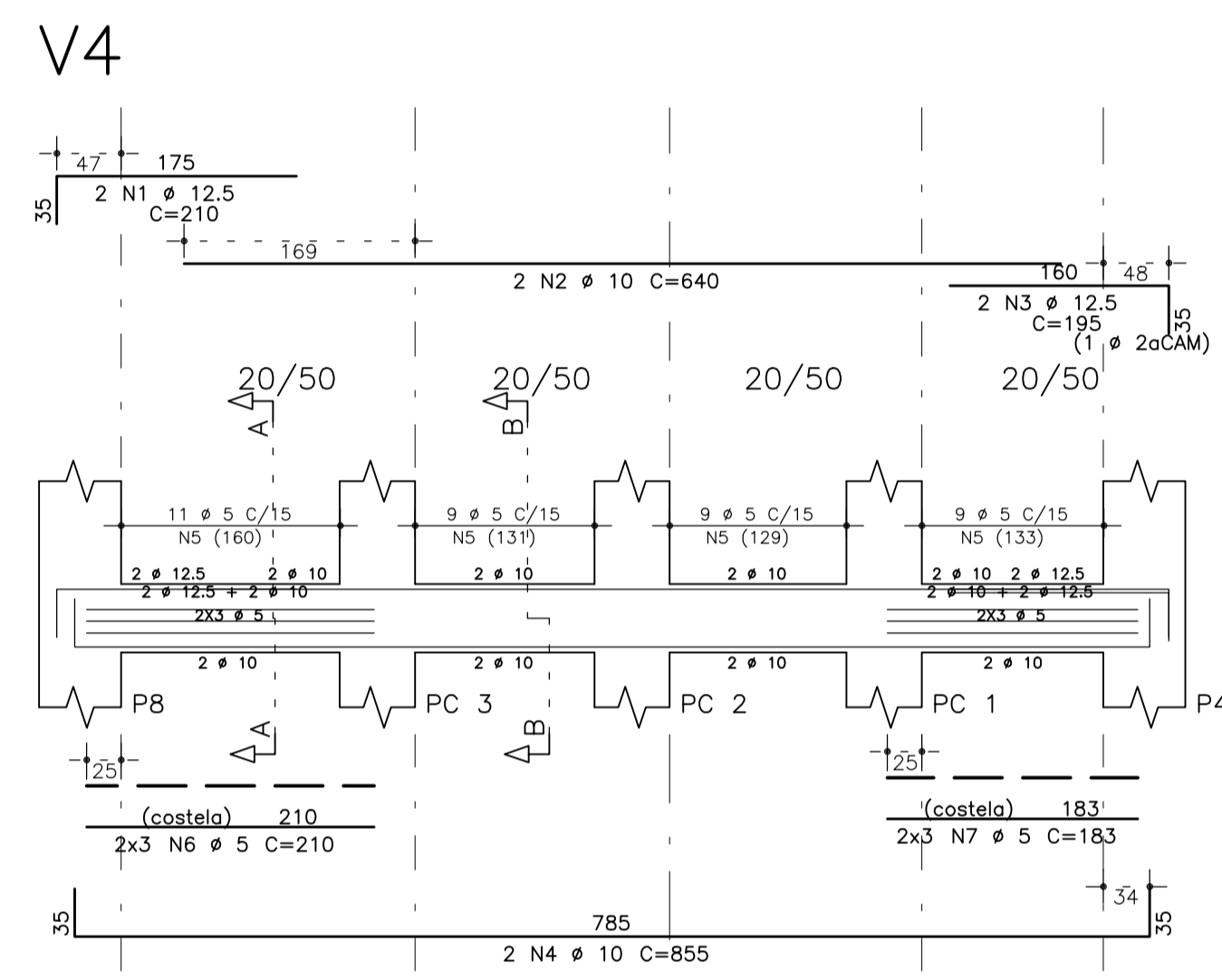
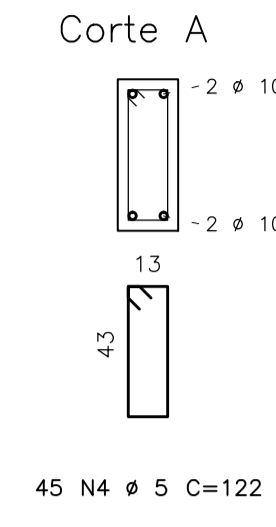
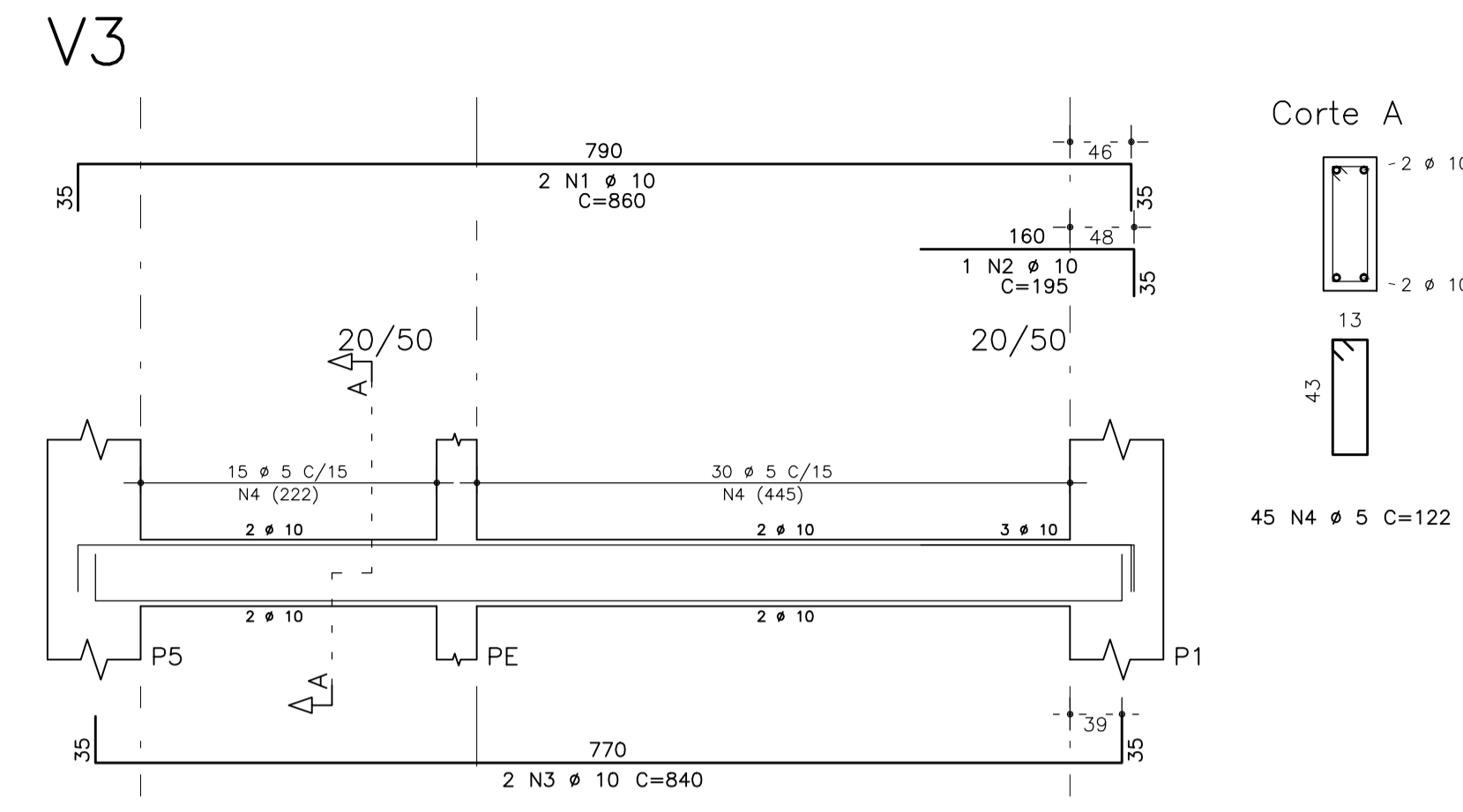
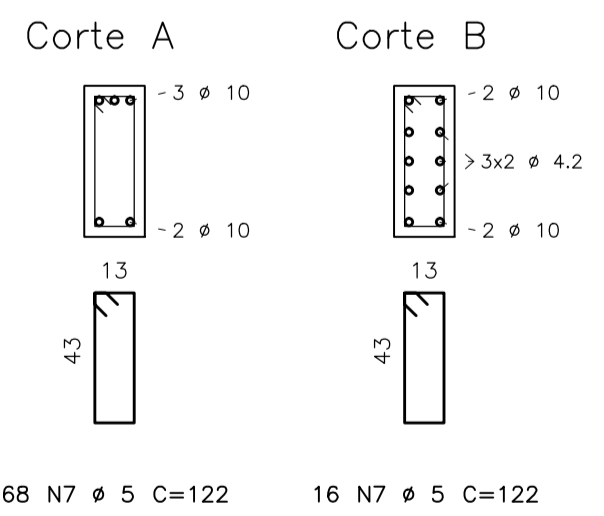
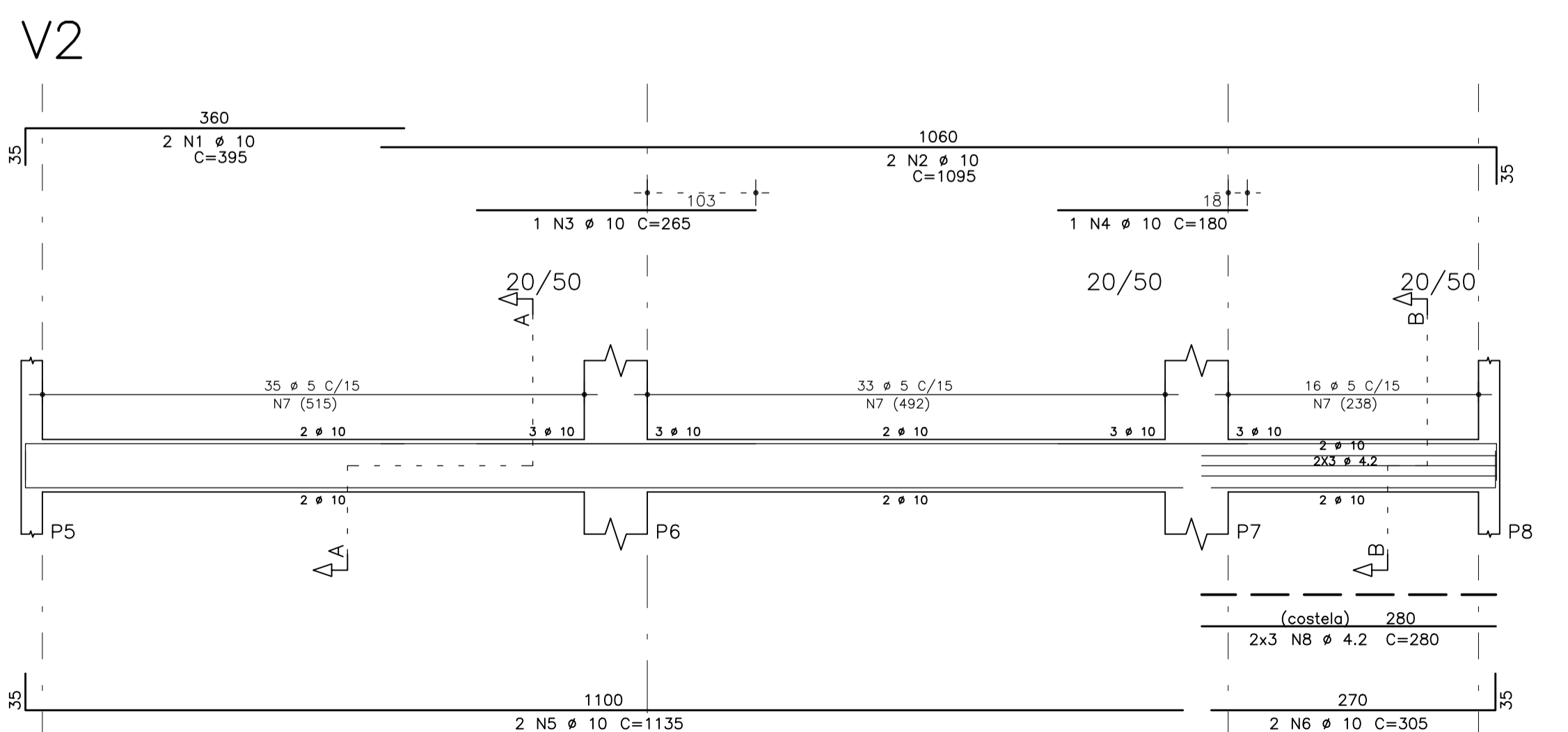
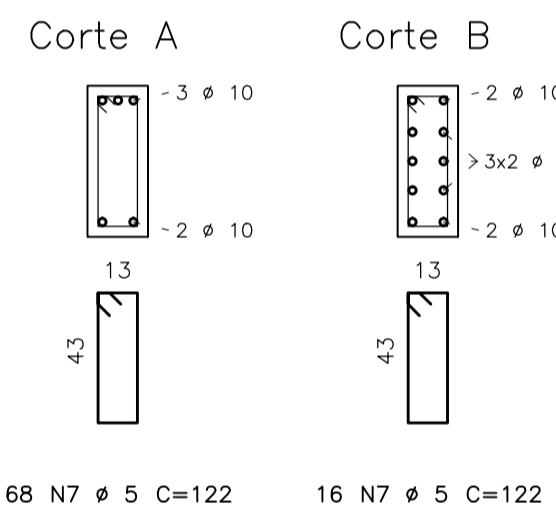
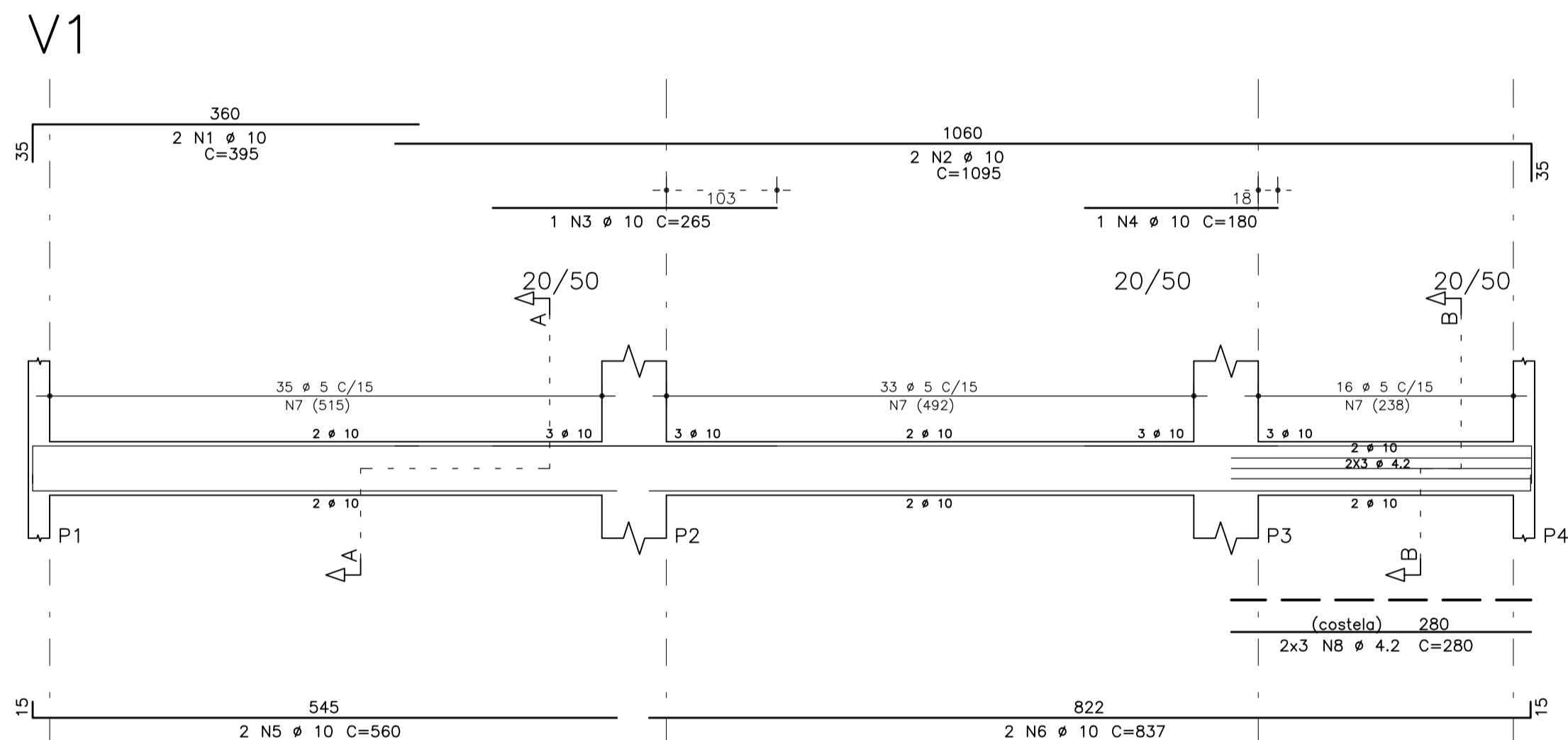
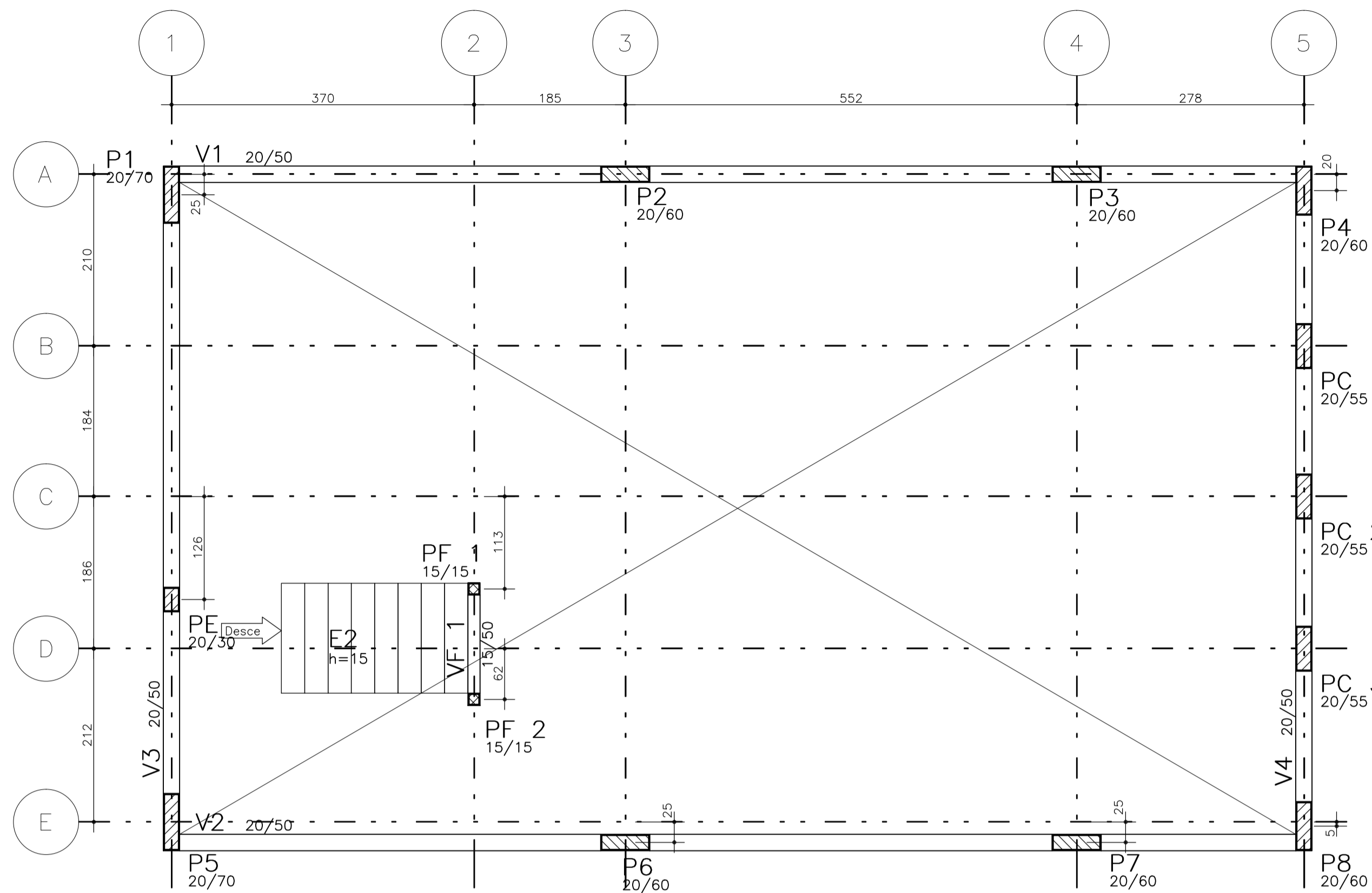


# FÔRMA DO CINTAMENTO.

Esc.: 1/50



AÇO	POS	BIT (mm)	QUANT	COMPRIMENTO (cm)	TOTAL (cm)
<b>V1</b>					
50A	1	10	2	395	790
50A	2	10	2	1095	2190
50A	3	10	1	265	265
50A	4	10	1	180	180
50A	5	10	2	560	1120
50A	6	10	2	837	1674
60B	7	5	84	122	10248
60B	8	4.2	6	280	1680
<b>V2</b>					
50A	1	10	2	395	790
50A	2	10	2	1095	2190
50A	3	10	1	265	265
50A	4	10	1	180	180
50A	5	10	2	1135	2270
50A	6	10	2	305	610
60B	7	5	84	122	10248
60B	8	4.2	6	280	1680
<b>V3</b>					
50A	1	10	2	860	1720
50A	2	10	1	195	195
50A	3	10	2	840	1680
60B	4	5	45	122	5490
<b>V4</b>					
50A	1	12.5	2	210	420
50A	2	10	2	640	1280
50A	3	12.5	2	195	390
50A	4	10	2	855	1710
60B	5	5	38	122	4636
60B	6	5	6	210	1260
60B	7	5	6	183	1098

AÇO	BIT (mm)	COMPR (m)	PESO (kg)
60B	4.2	34	4
60B	5	330	53
50A	10	191	120
50A	12.5	8	8
Peso Total 60B =			56 kg
Peso Total 50A =			128 kg

02	-	-	-
01	-	-	-
00	JM	EMISSÃO INICIAL	11/02/2011
REVISÃO	RESPONSÁVEL	ASSUNTO	DATA

FIDE  
Fundação Nacional de Desenvolvimento da Educação

T.ã.c.l.ã  
da O.ã.ã.ã.ã.

**INSTITUTO FEDERAL DE EDUCAÇÃO, CIÊNCIA E TECNOLOGIA ALAGOAS**

PROJETO EXECUTIVO

**ESTRUTURA DE CONCRETO ARMADO**

PROJETO 04.01

BIBLIOTECA  
FORMA DO CINTAMENTO  
ARM. VIGAS CINTAS

**EC**

ESCALA INDICADA

COBERTURA: 5,071 ha

DESENHO: AOM / SCS / JMC / TMJ

PRANCHAS

25/61