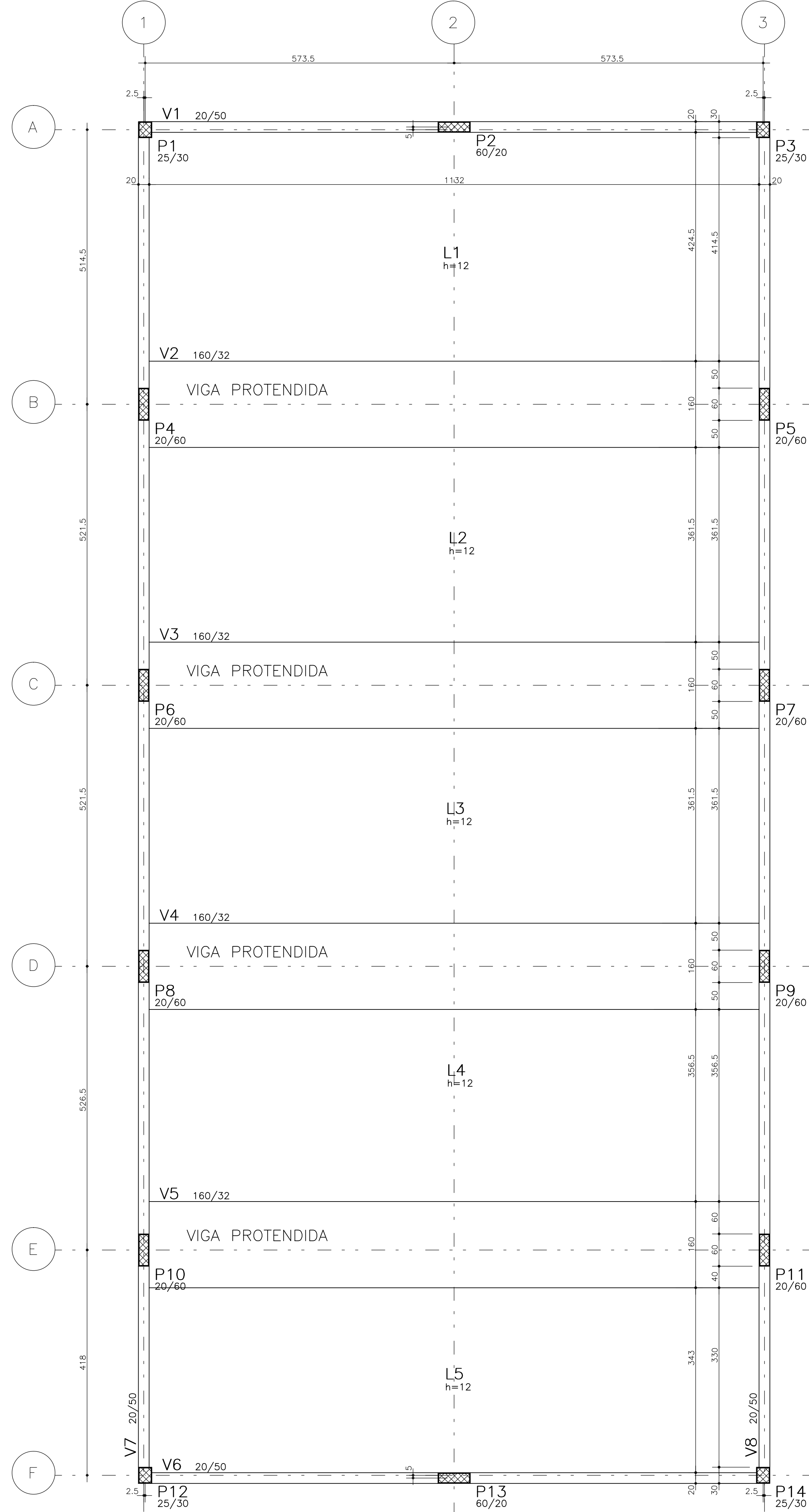
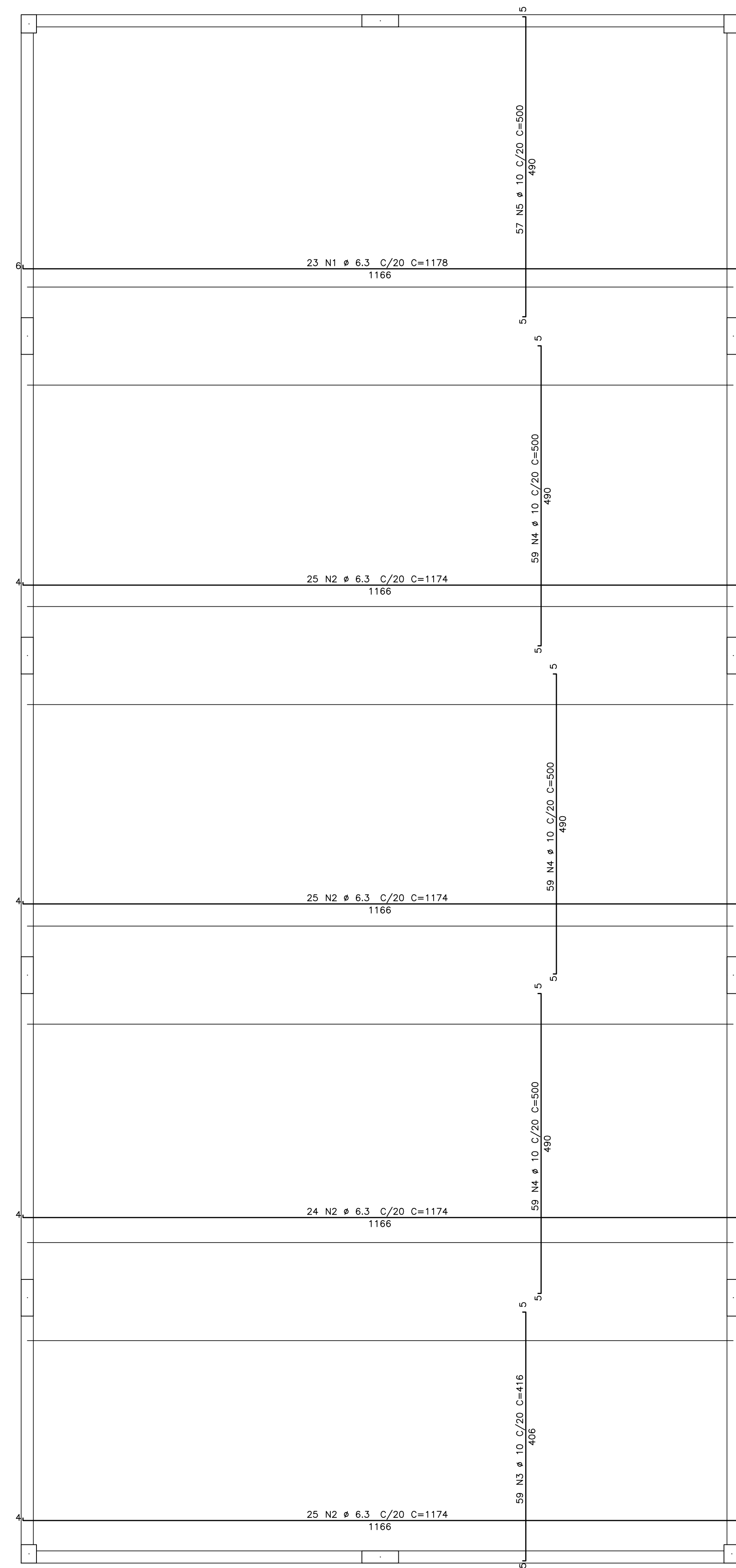


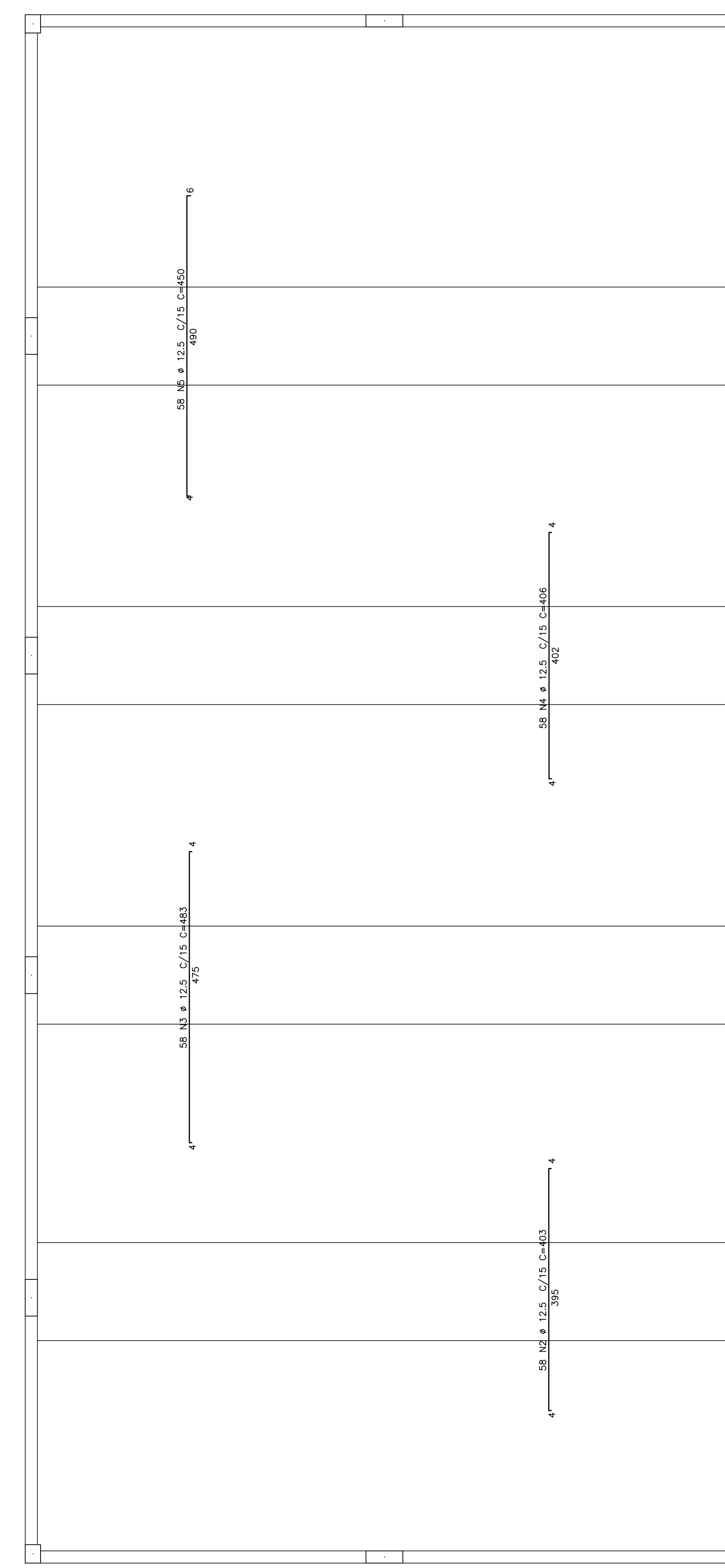
FÔRMA DO FORRO
ESC.-1/50



ARM. POS. DAS LAJES DO FORRO
ESC.-1/50



ARM. NEG. DAS LAJES DO FORRO
ESC.-1/50

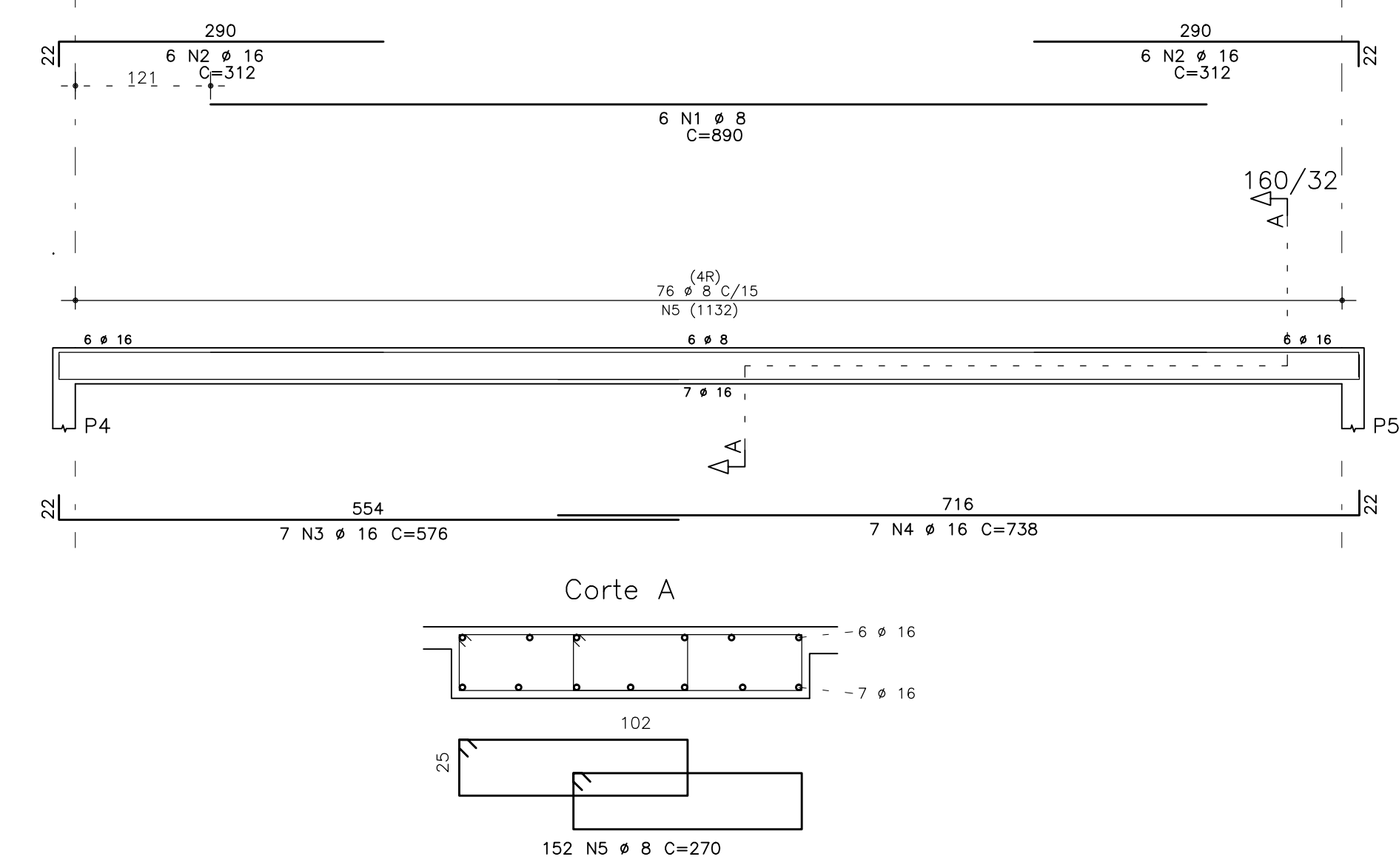


ATENÇÃO:
ARMADURA DE DISTRIBUIÇÃO # 5 C/30

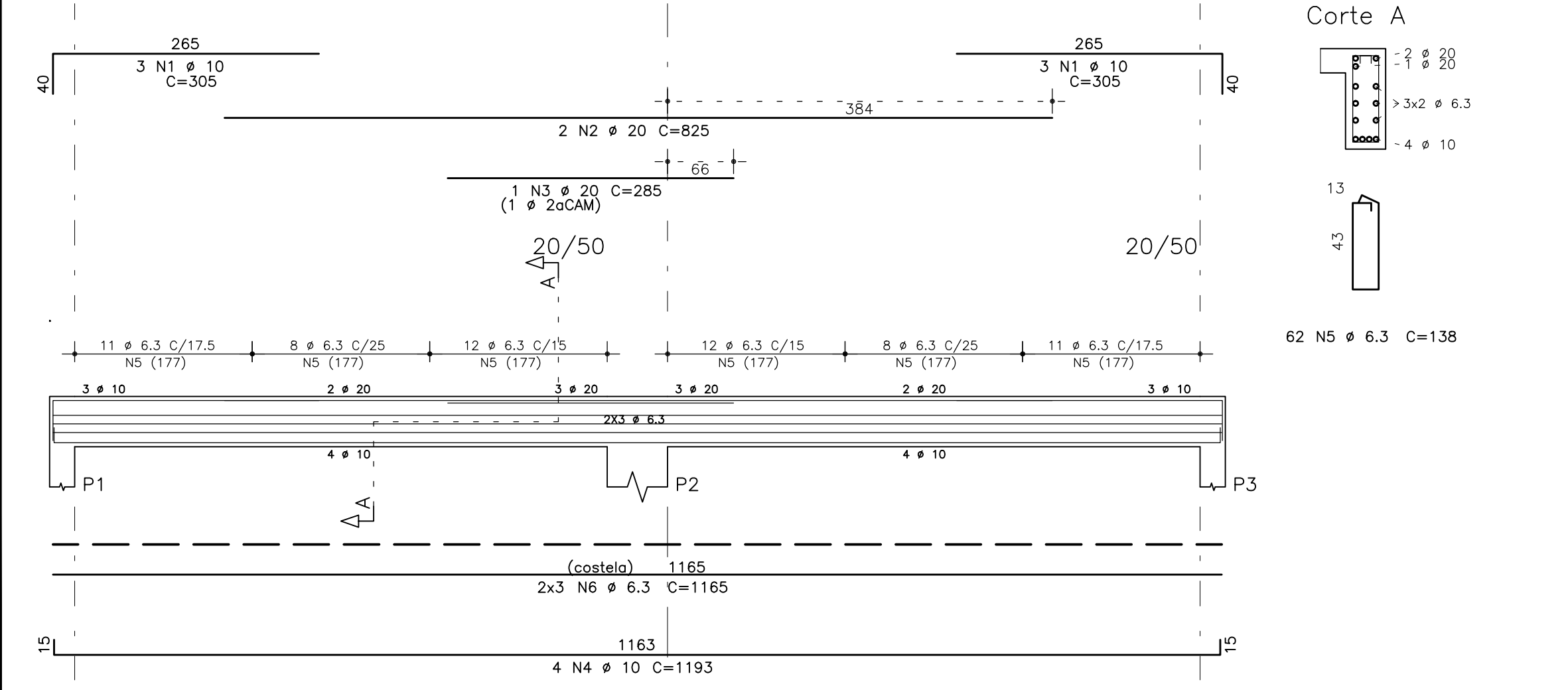
ARMAÇÃO	POS	BIT (mm)	QUANT	COMPRIMENTO (cm)	TOTAL (cm)
ARMADURA NEGATIVA DAS LAJES DO FORRO					
608	1	5	1	86542	86542
50A	2	12.5	58	453	23374
50A	3	12.5	58	483	28014
50A	4	12.5	58	406	23548
50A	5	12.5	58	450	26100
ARMADURA POSITIVA DAS LAJES DO FORRO					
50A	1	6.3	23	1178	27094
50A	2	6.3	99	1174	116296
50A	3	10	59	416	24544
50A	4	10	177	500	88500
50A	5	10	57	500	28500
V1=V6 (C/2)					
50A	1	10	12	305	3660
50A	3	20	2	825	3300
50A	4	10	8	285	3720
50A	5	10	8	1190	6344
50A	6	6.3	124	138	17112
50A	6	6.3	12	1165	13980
V2=V3=V4=V5 (X/4)					
50A	1	8	24	890	21360
50A	2	16	48	312	14976
50A	3	16	28	576	16128
50A	4	16	28	738	29664
50A	5	8	608	270	164160
V7=V8 (X/2)					
50A	1	10	6	260	1560
50A	2	10	4	1070	4280
50A	3	10	4	250	1000
50A	4	10	12	260	3120
50A	5	10	4	975	3900
50A	6	10	6	418	2508
50A	7	10	6	977	5862
50A	8	10	6	495	2970
50A	9	10	6	1054	6384
50A	10	6.3	112	138	15456
608	11	5	188	135	25380
50A	12	6.3	12	956	11472
608	13	5	12	522	6264
50A	14	6.3	12	1050	12600

ARMAÇÃO	RESUMO AÇO	CA	50-60	PESO (kg)
608	2	177	188	188
50A	6.3	2139	535	535
50A	8	1825	742	742
50A	10	1863	1174	1174
50A	12.5	1010	1010	1010
50A	16	518	828	828
50A	20	39	97	97
Peso Total				608 = 188 kg
Peso Total				50A = 4386 kg

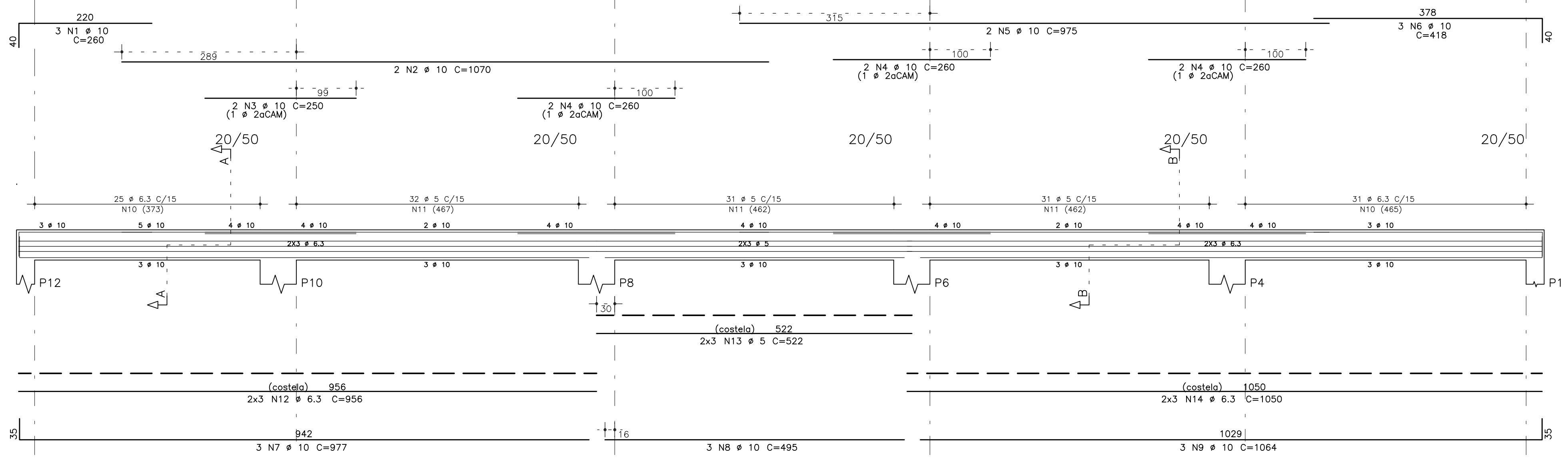
V2=V3=V4=V5



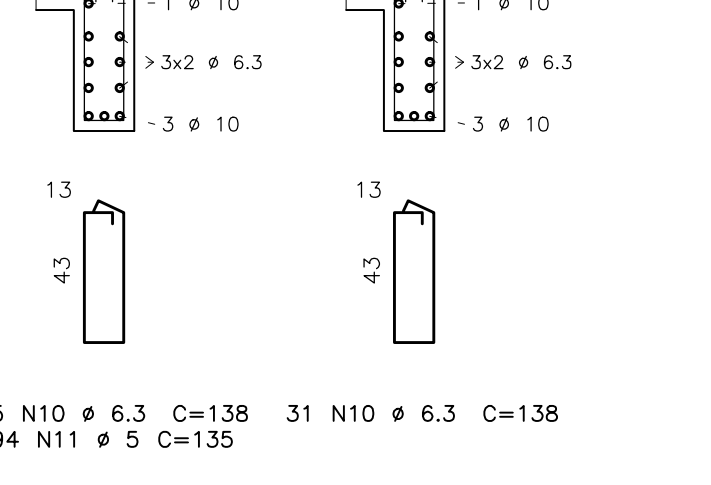
V1=V6



V7=V8



Corte A Corte B



02	-	-	-
01	-	-	-
00	JM	EMISSÃO INICIAL	11/02/2011
Revista	RESPONSÁVEL	ASSINATURA	SINA



INSTITUTO FEDERAL DE EDUCAÇÃO, CIÊNCIA E TECNOLOGIA ALAGOAS

UNIVERSIDADE FEDERAL DE ALAGOAS

INSTITUTO FEDERAL DE ALAGOAS

PROJETO EXECUTIVO	PROJETO 04.01
ESTRUTURA DE CONCRETO ARMADO	EC
AUDITÓRIO	22/61
FORMA E ARM. DAS LAJES DO FORRO	
ARM. VIGAS DO FORRO	