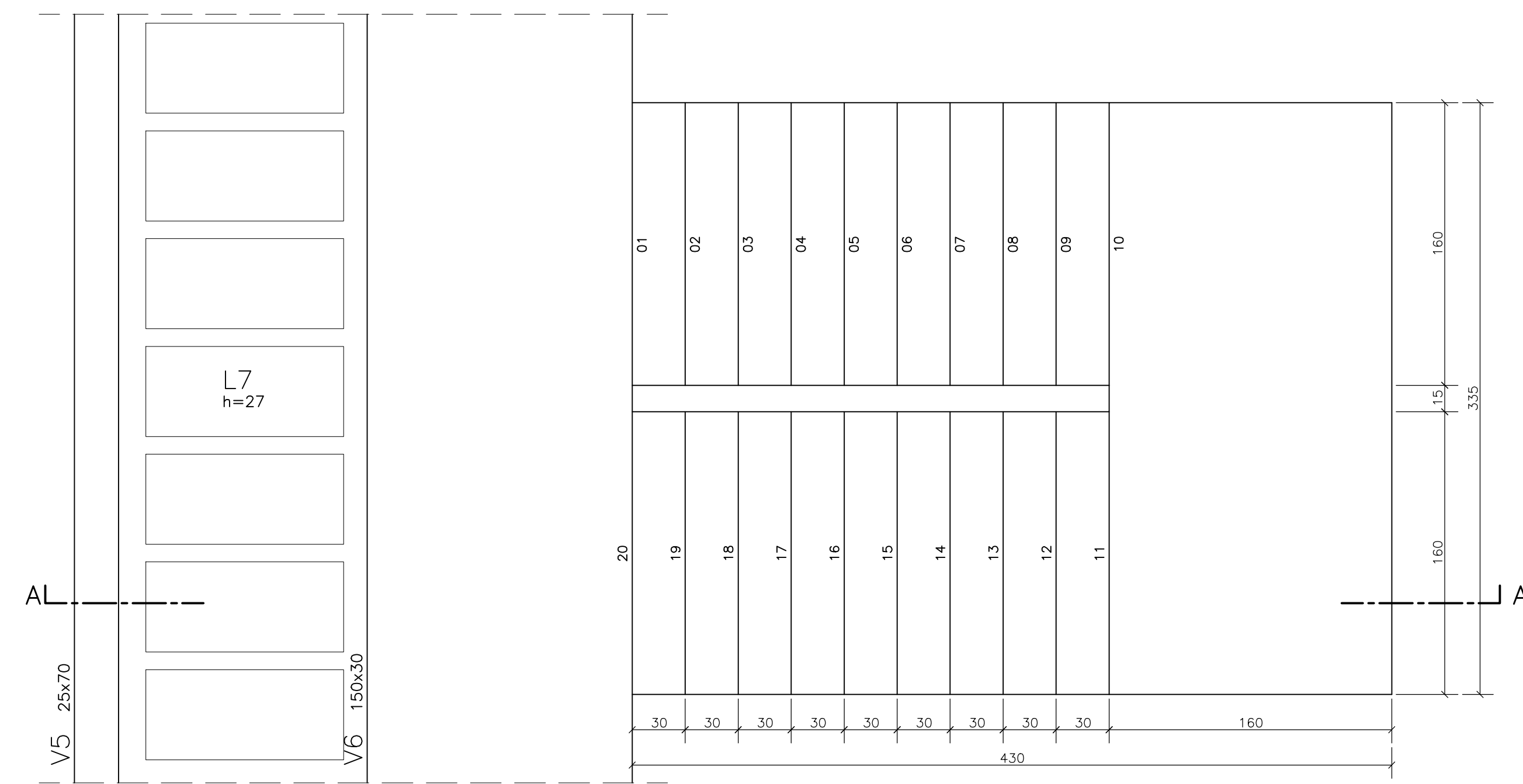
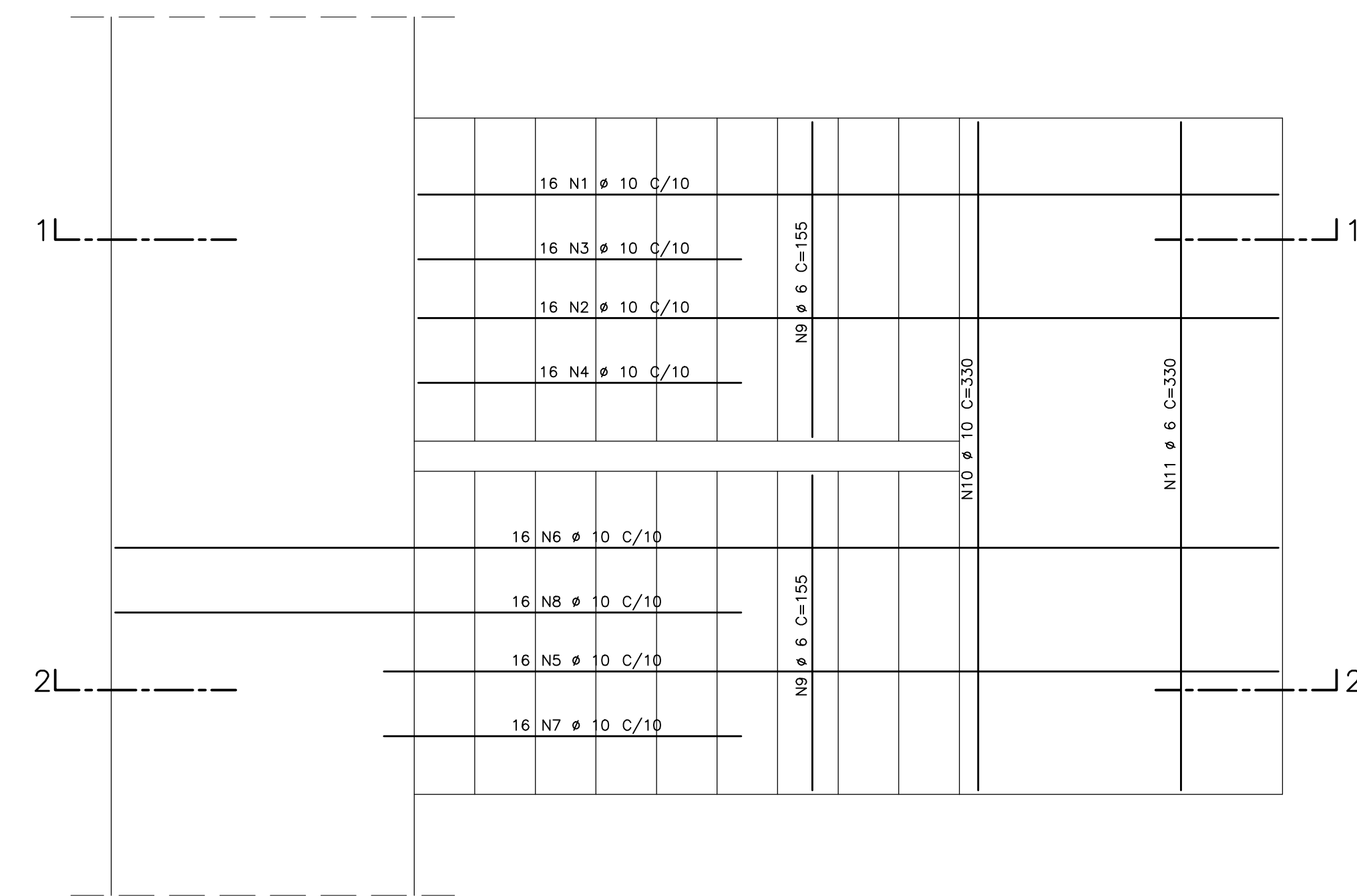


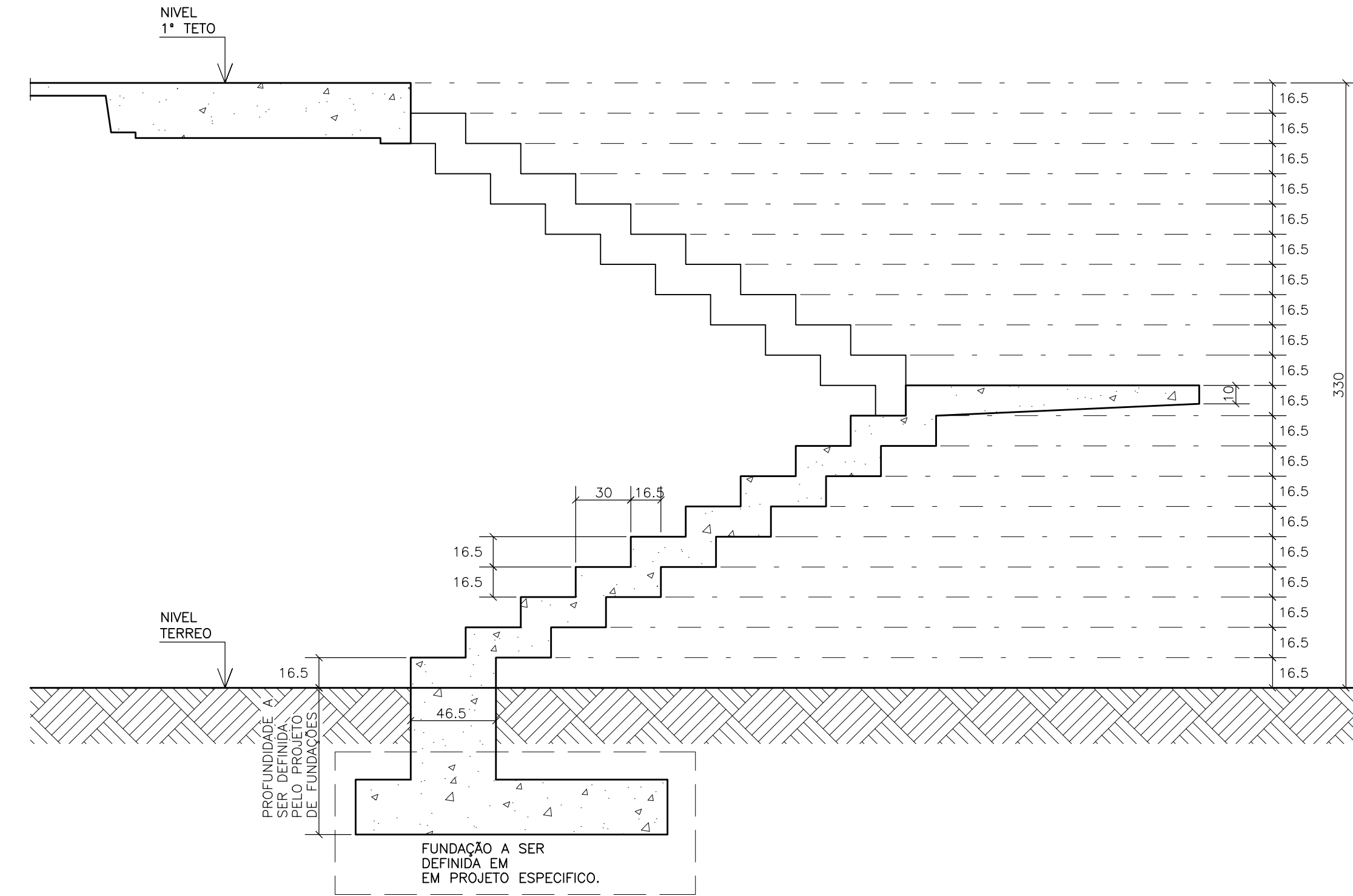
FORMA DA ESCADA  
ESC.-1/25



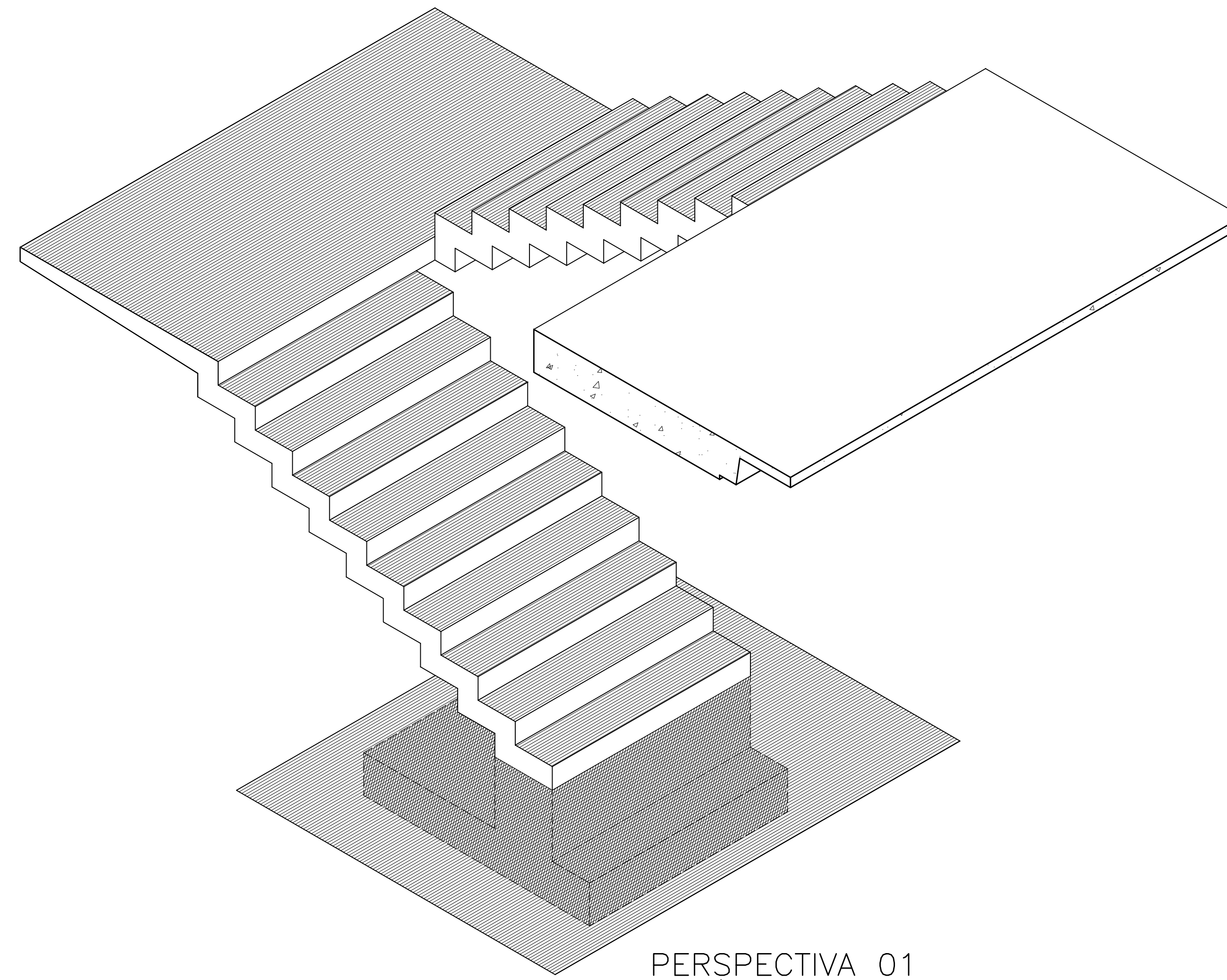
ARMADURA DA ESCADA  
ESC.-1/25



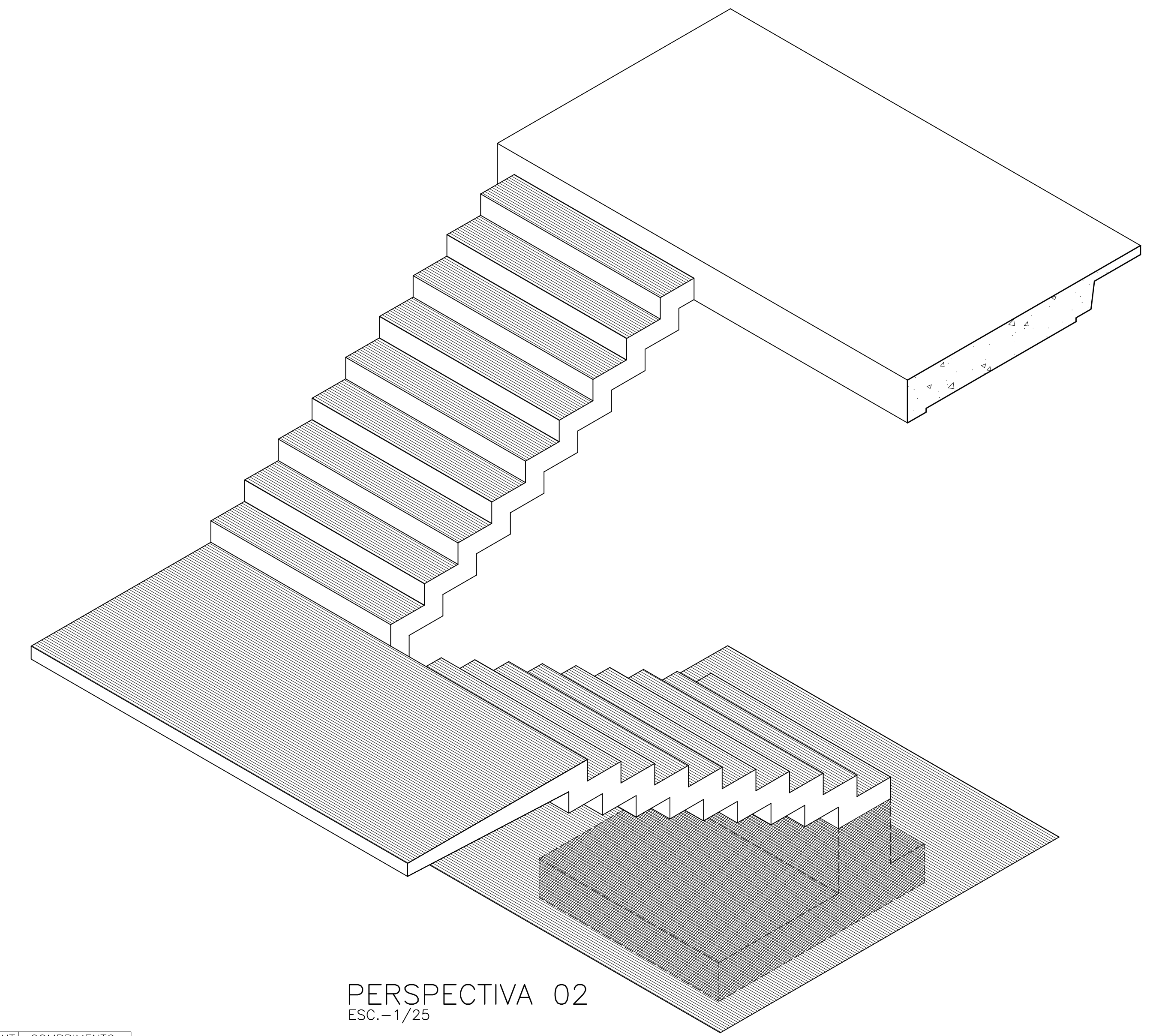
CORTE A.A  
ESC.-1/25



ESCADA 01 = ESCADA 02



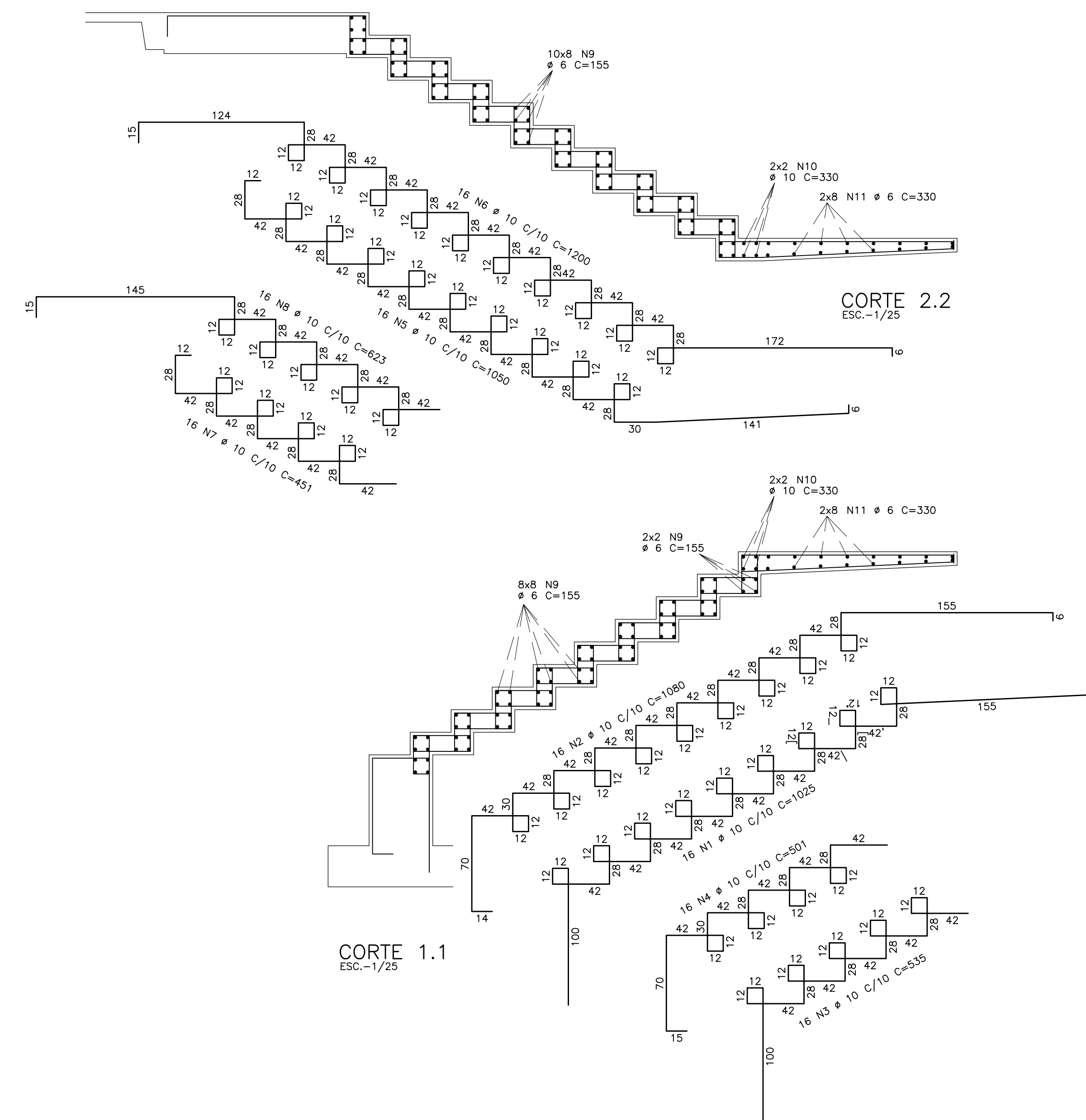
PERSPECTIVA 01  
ESC.-1/25



PERSPECTIVA 02  
ESC.-1/25

ACØ	POS	BIT (mm)	QUANTI	COMPRIMENTO UNIT (cm)	TOTAL (cm)
S0A	1	10	16	1023	16368
S0A	2	10	16	1083	17328
S0A	3	10	16	530	8480
S0A	4	10	16	501	8016
S0A	5	10	16	1050	16800
S0A	6	10	16	1200	19200
S0A	7	10	16	451	7216
S0A	8	10	16	623	9968
S0A	9	10	16	155	2480
S0A	10	10	4	330	1320
S0B	11	6	16	330	5280

ACØ	BIT (mm)	RESUMO	ANO	CA	50-60	PESO (kg)
S0B	6	282				43
S0A	10	1048				660
Peso Total						603 kg
Peso S0A						660 kg



BITOLAS		
CA=60	mm	POL.
	3,4	1/8
CA=50	5	1/5
	6,3	1/4
	8	5/16
	10	3/8
	12,5	1/2
	16	5/8
	20	3/4
22,5	7/8	
25	1	

02	--	--	--
01	--	--	--
00	JM	EMISSÃO INICIAL	11/02/2011
REVISÃO	RESPONSÁVEL	ASSINADO	DATA



INSTITUTO FEDERAL DE EDUCAÇÃO, CIÊNCIA E TECNOLOGIA ALAGOAS

UNIVERSIDADE FEDERAL DE ALAGOAS

UNIVERSIDADE FEDERAL DE ALAGOAS

INSTITUTO FEDERAL DE ALAGOAS

PROJETO EXECUTIVO

ESTRUTURA DE CONCRETO ARMADO

BLOCO PEDAGÓGICO

FORMA E ARM. DAS ESCADAS

PROJETO 04.01

EC

05/61