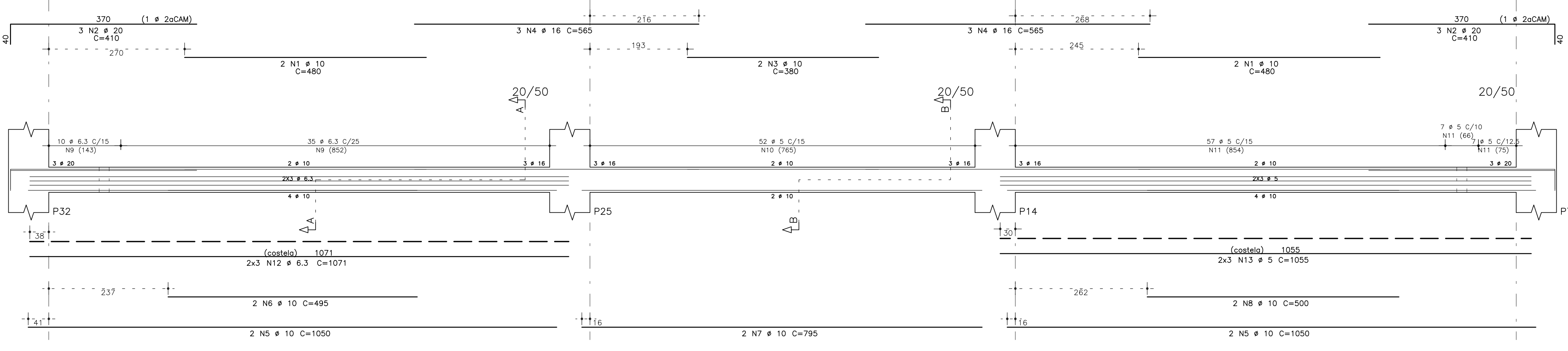
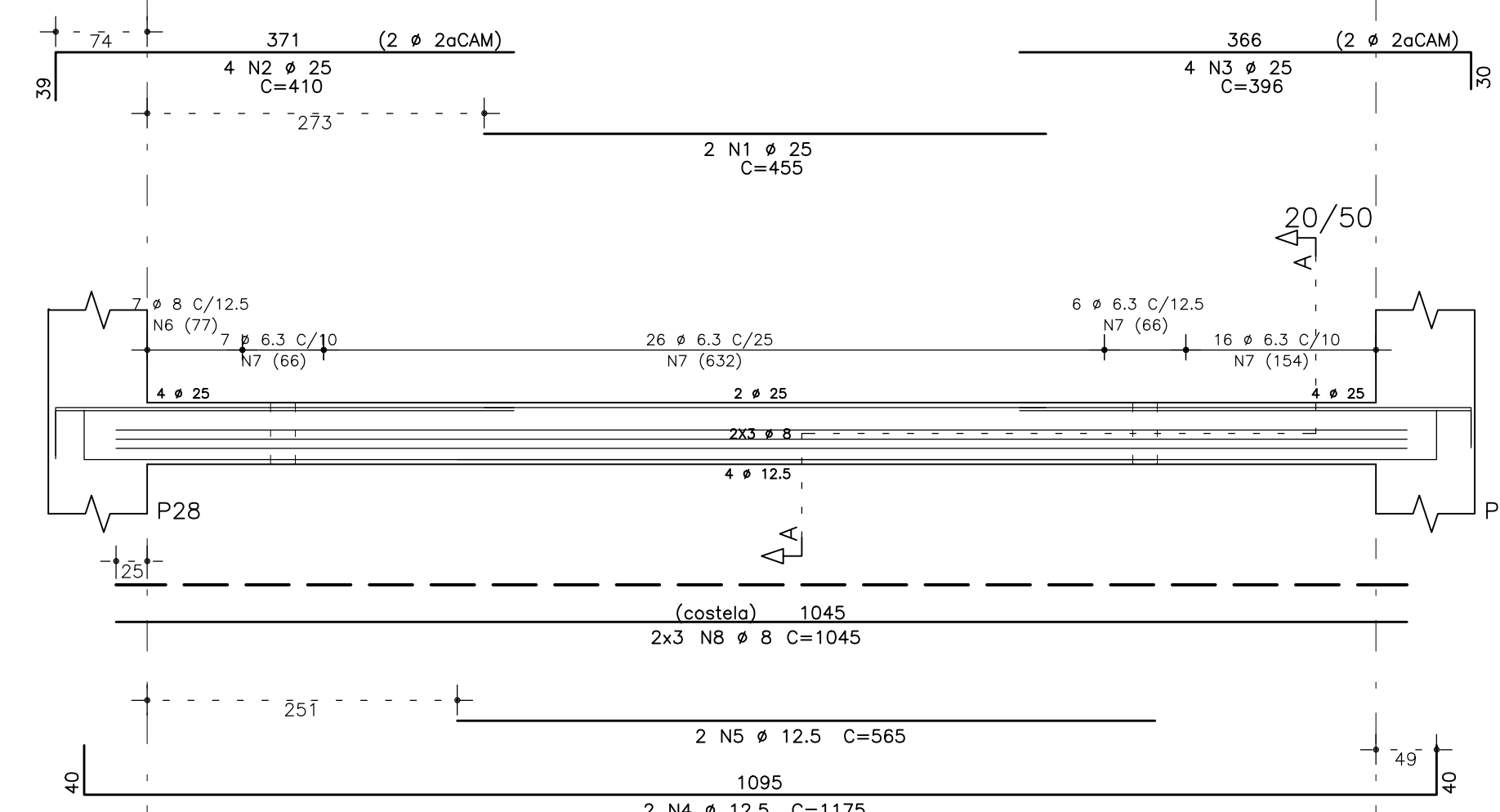


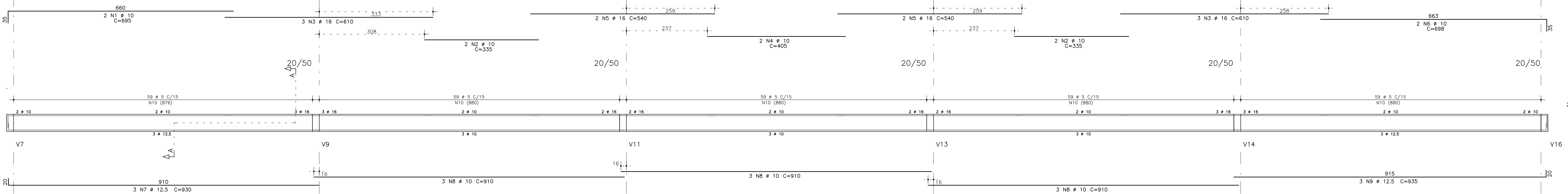
V17



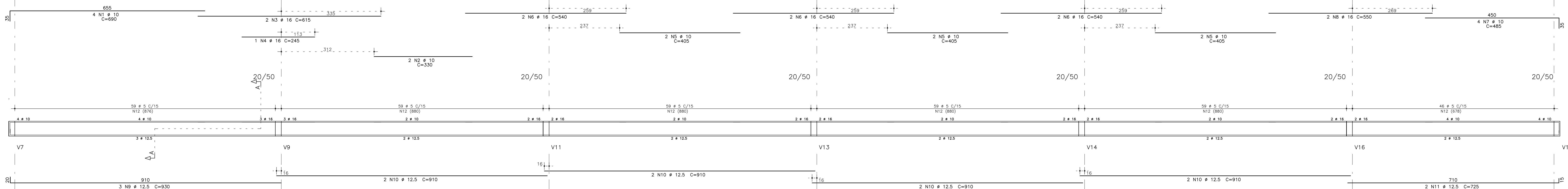
V10=V11=V12=V13



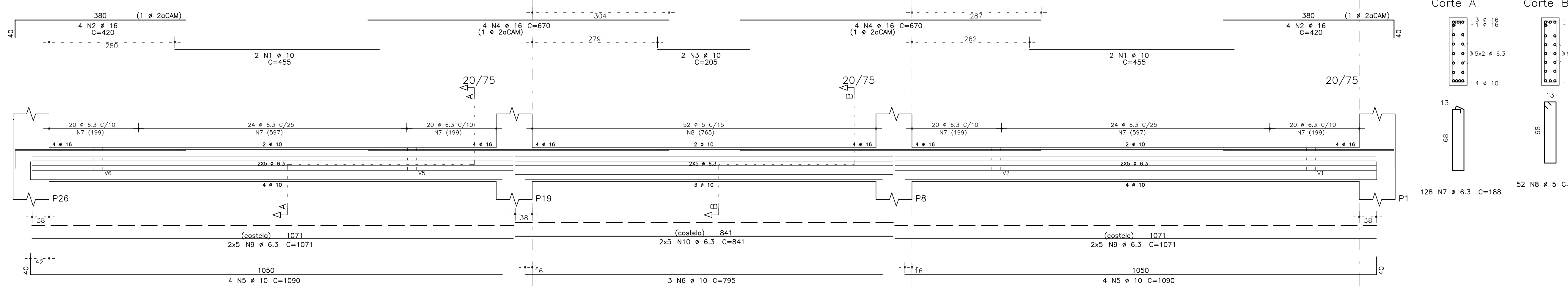
V2=V5



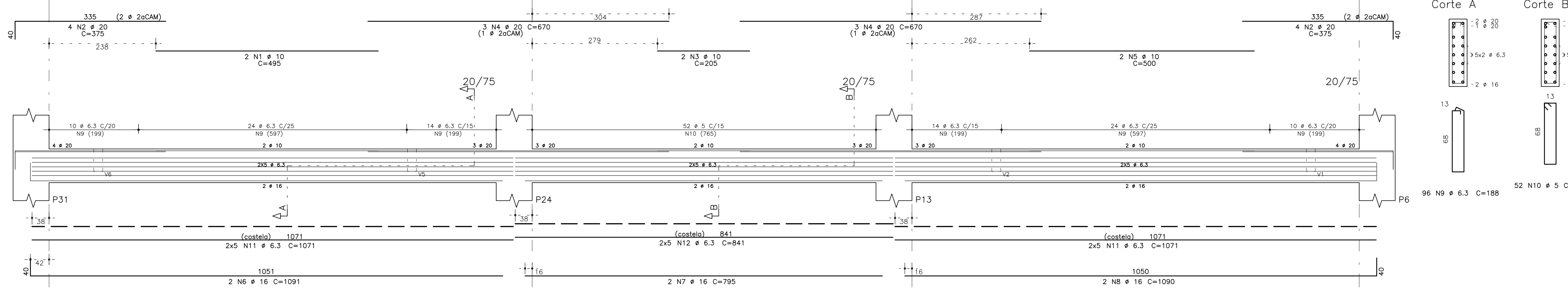
V1=V6



V7=V9=V14



V16



AÇO	POS	BIT (mm)	QUANT	COMPRIMENTO (cm)	TOTAL (cm)
V1=V6 (X2)	50A	1	10	8	660
50A	3	16	4	330	
50A	4	16	4	615	
50A	5	10	12	465	
50A	6	16	2	240	
50A	7	10	8	485	
50A	8	16	4	560	
50A	9	12,5	6	930	
50A	10	12,5	16	910	
50A	11	12,5	6	725	
50A	12	5	685	122	

AÇO	POS	BIT (mm)	QUANT	COMPRIMENTO (cm)	TOTAL (cm)
V2=V5 (X2)	50A	1	10	4	660
50A	2	10	8	330	
50A	3	10	8	330	
50A	4	10	4	405	
50A	5	10	24	525	
50A	6	10	4	698	
50A	7	10	6	930	
50A	8	10	18	16380	
50A	9	2,5	60	935	
60B	10	5	590	122	

AÇO	POS	BIT (mm)	QUANT	COMPRIMENTO (cm)	TOTAL (cm)
V7=V9=V14 (X3)	50A	1	10	12	455
50A	2	16	24	420	
50A	3	16	24	670	
50A	4	16	24	1090	
50A	5	10	24	1090	
50A	6	10	8	795	
50A	7	6,3	384	188	
50A	8	6,3	156	172	
50A	9	6,3	60	1071	
50A	10	6,3	30	841	

AÇO	POS	BIT (mm)	QUANT	COMPRIMENTO (cm)	TOTAL (cm)
V10=V11=V12=V13 (X4)	50A	1	25	8	455
50A	3	25	16	396	
50A	4	12,5	8	1175	
50A	5	8	565	4520	
50A	6	8	141	3648	
50A	7	6,3	220	138	
50A	8	24	1045	25560	

AÇO	POS	BIT (mm)	QUANT	COMPRIMENTO (cm)	TOTAL (cm)
V16	50A	1	10	2	495
50A	2	20	8	375	
50A	3	10	2	205	
50A	4	20	6	670	
50A	5	10	6	1000	
50A	6	16	2	1091	
50A	7	6,3	96	795	
50A	8	16	2	1090	
50A	9	6,3	96	188	
60B	10	5	52	172	
50A	11	6,3	29	1071	
50A	12	6,3	10	841	

AÇO	POS	BIT (mm)	QUANT	COMPRIMENTO (cm)	TOTAL (cm)
V17	50A	1	10	4	480
50A	2	20	6	410	
50A	3	10	2	205	
50A	4	16	6	565	
50A	5	10	4	1050	
50A	6	10	2	495	
50A	7	10	2	795	
50A	8	10	2	500	
50A	9	6,3	45	138	
60B	10	5	52	122	
50A	11	6,3	71	135	
50A	12	6,3	6	1071	
50A	13	5	6	1095	

RESUMO AÇO CA 50-60				
AÇO	BIT (mm)	COMPR (cm)	PESO (kg)	
60B	5	2132	241	
50A	6,3	2255	631	
50A	8	290	116	
50A	10	847	597	
50A	12,5	482	482	
50A	16	588	940	
50A	20	95	237	
50A	25	165	601	
Peso Total	60B =		341 kg	
Peso Total	50A =		3664 kg	

02	-	-	-
01	-	-	-
00	3M	EMISSÃO INICIAL	11/02/2011
REVISOR	RESPONSÁVEL	APROVADO	DATA

**FNDE** Fundo Nacional de Desenvolvimento da Educação

**INSTITUTO FEDERAL DE EDUCAÇÃO, CIÊNCIA E TECNOLOGIA ALAGOAS**

PROJETO EXECUTIVO

ESTRUTURA DE CONCRETO ARMADO

BLOCO PEDAGÓGICO

ARM. VIGAS CINTAS

PRIMEIRA

04/61