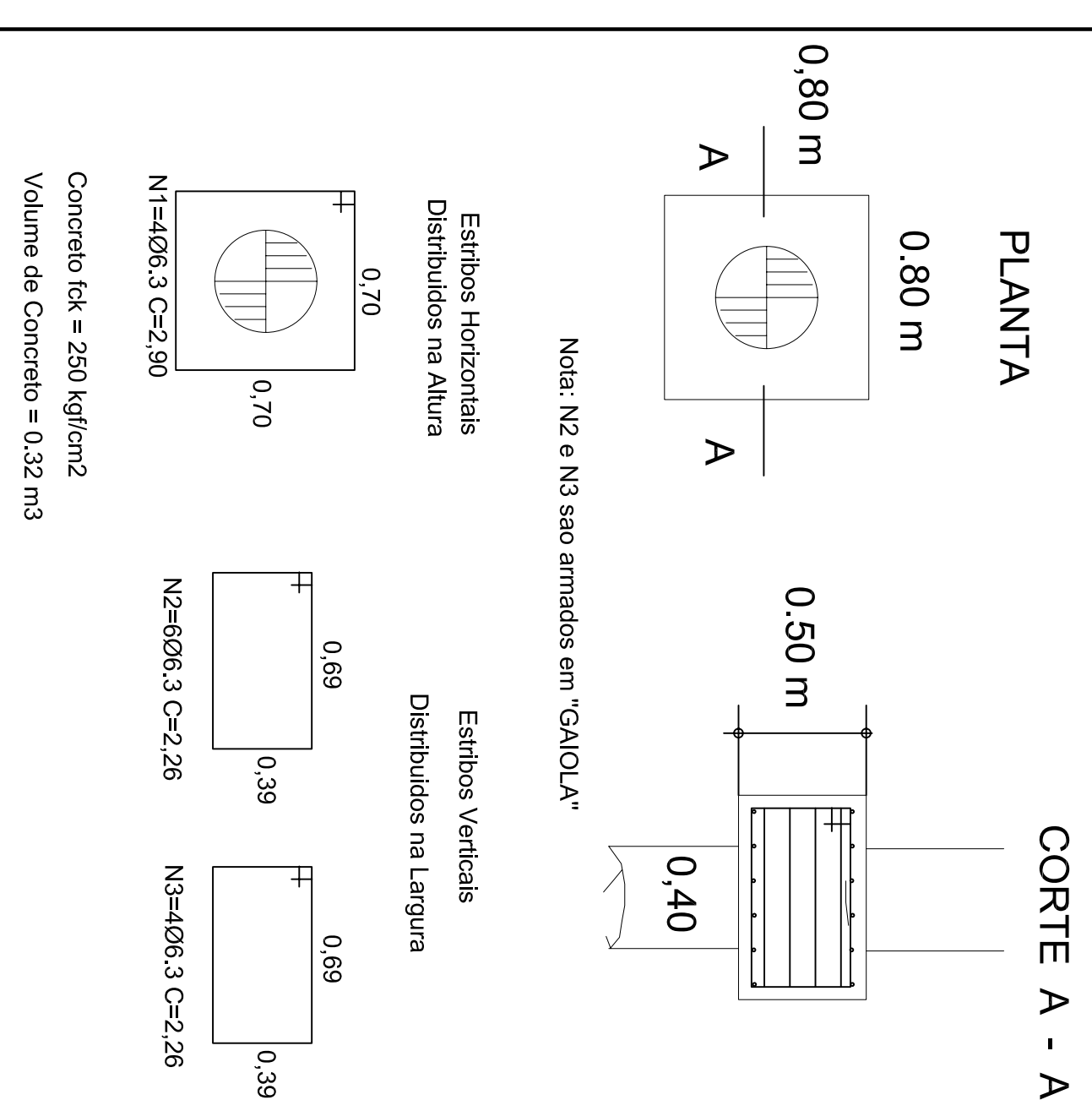
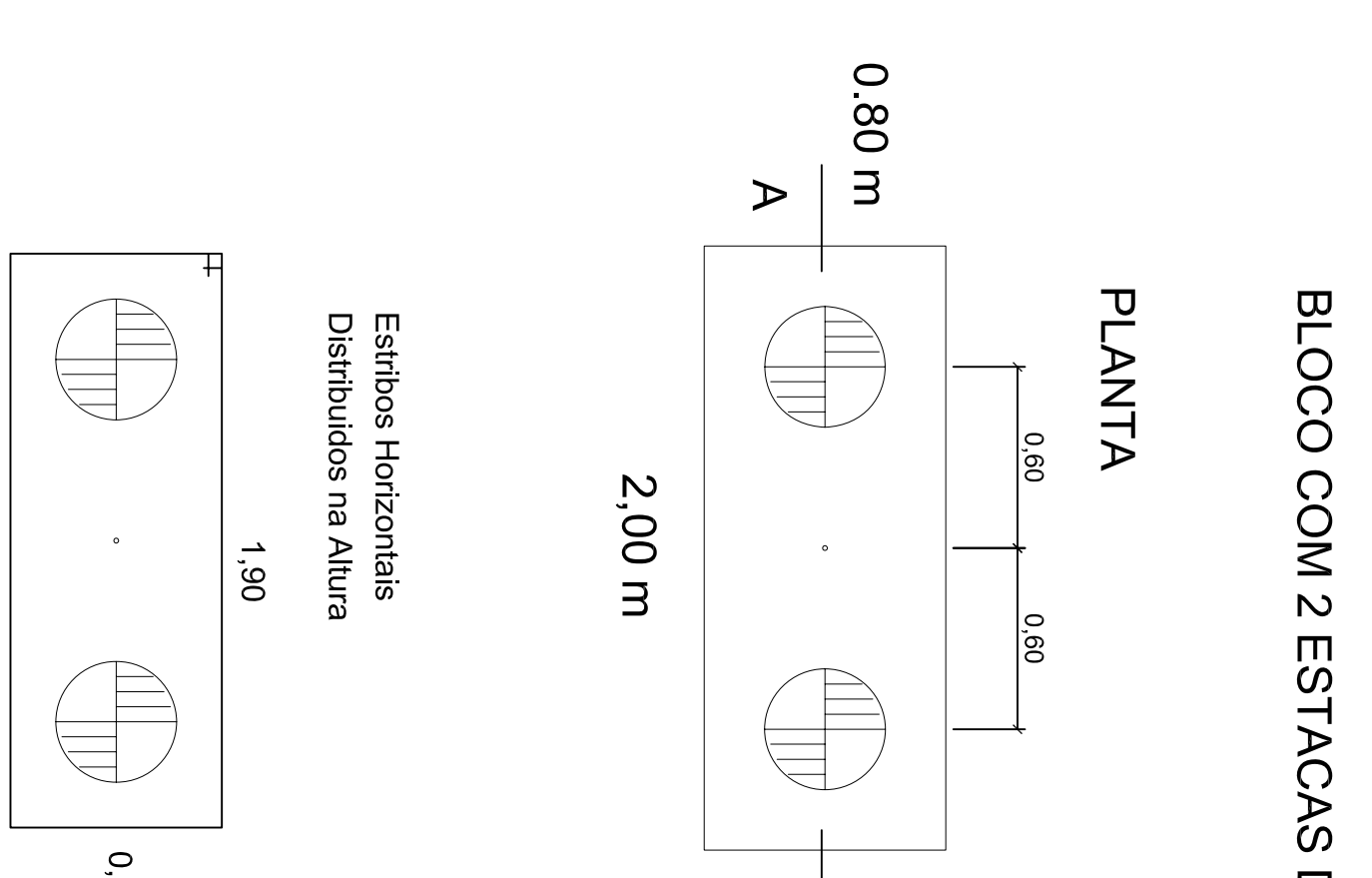


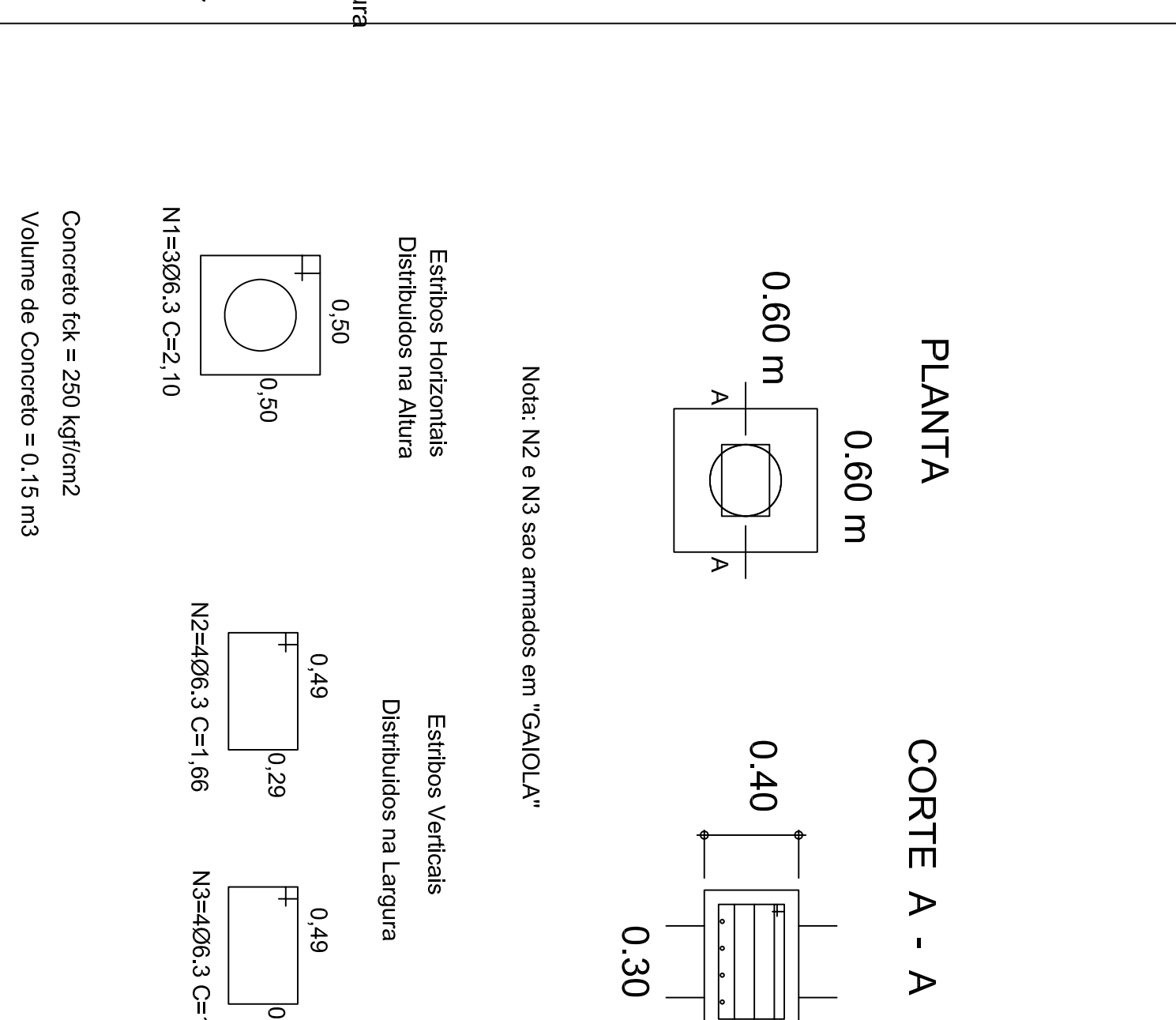
BLOCOS (x22)



BLOCOS (x2)



P1 A P8 - P13-P15-P17-P23-P24 (x11)



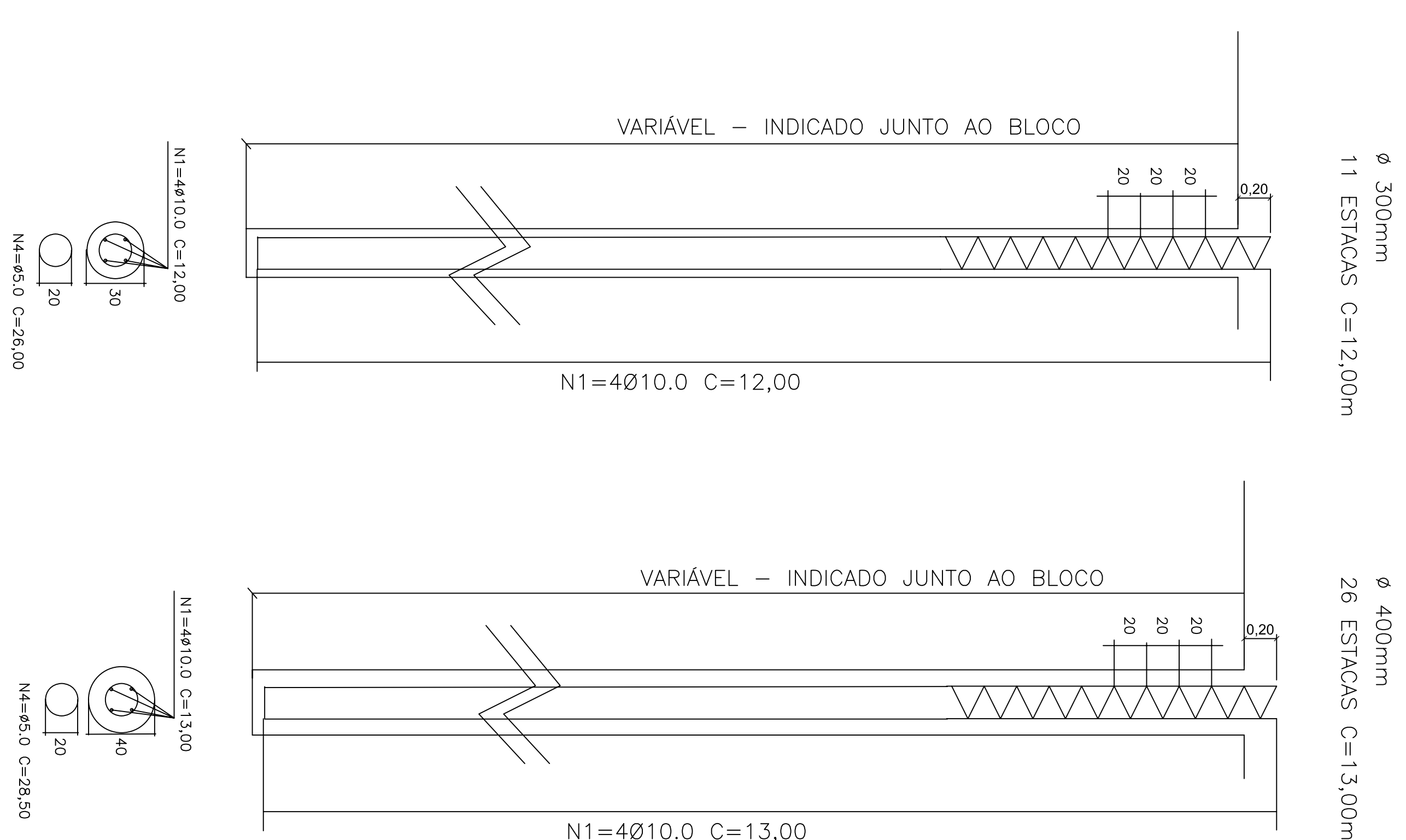
RESUMO ESTACAS

Ø	COMP (TOTAL)	PESO (kg)	AÇO
N1	10.0	1880	CA-50
N2	5.0	1027	CA-60
PESO TOTAL 1350 Kg			
CONSUMO DE ARGAMASSA = 51.50m³			

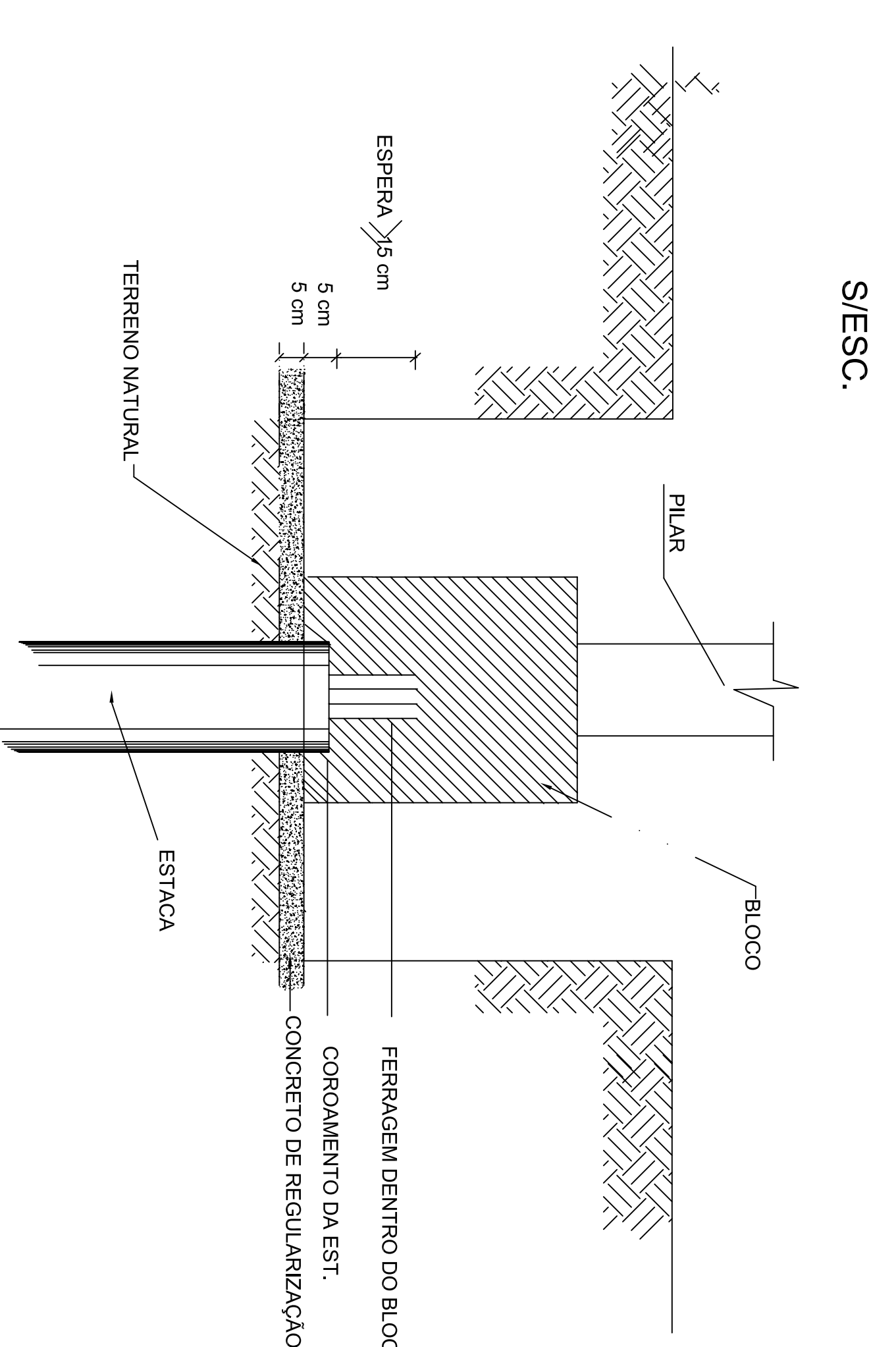
RESUMO BLOCOS

N	COMP (TOTAL)	PESO (kg)	AÇO
6.3	1021	296	
10	44	28	CA-50
16	39	78	
PESO TOTAL 362 Kg			
CONSUMO DE CONCRETO = 10.3m³			

ESTACAS

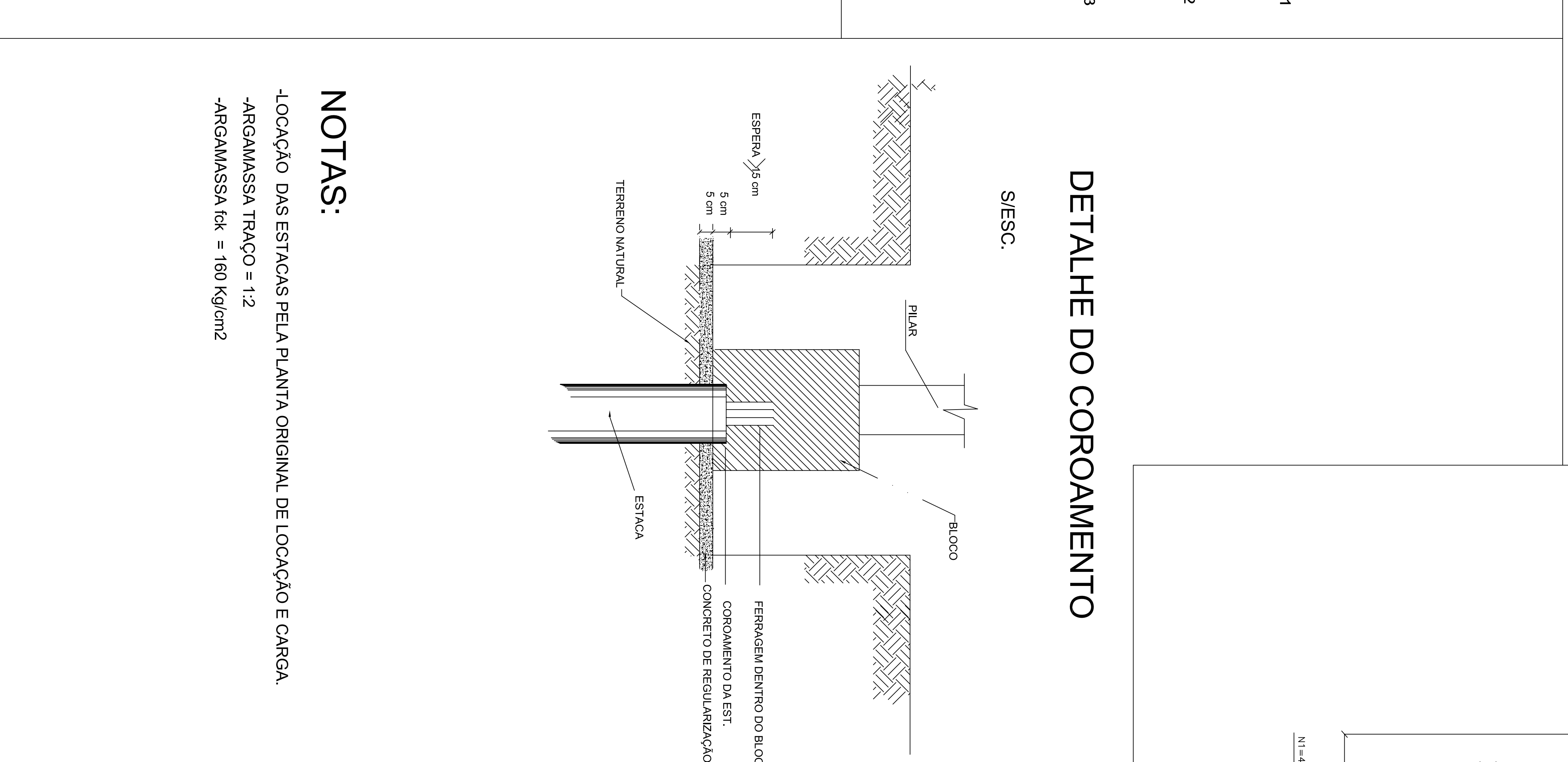
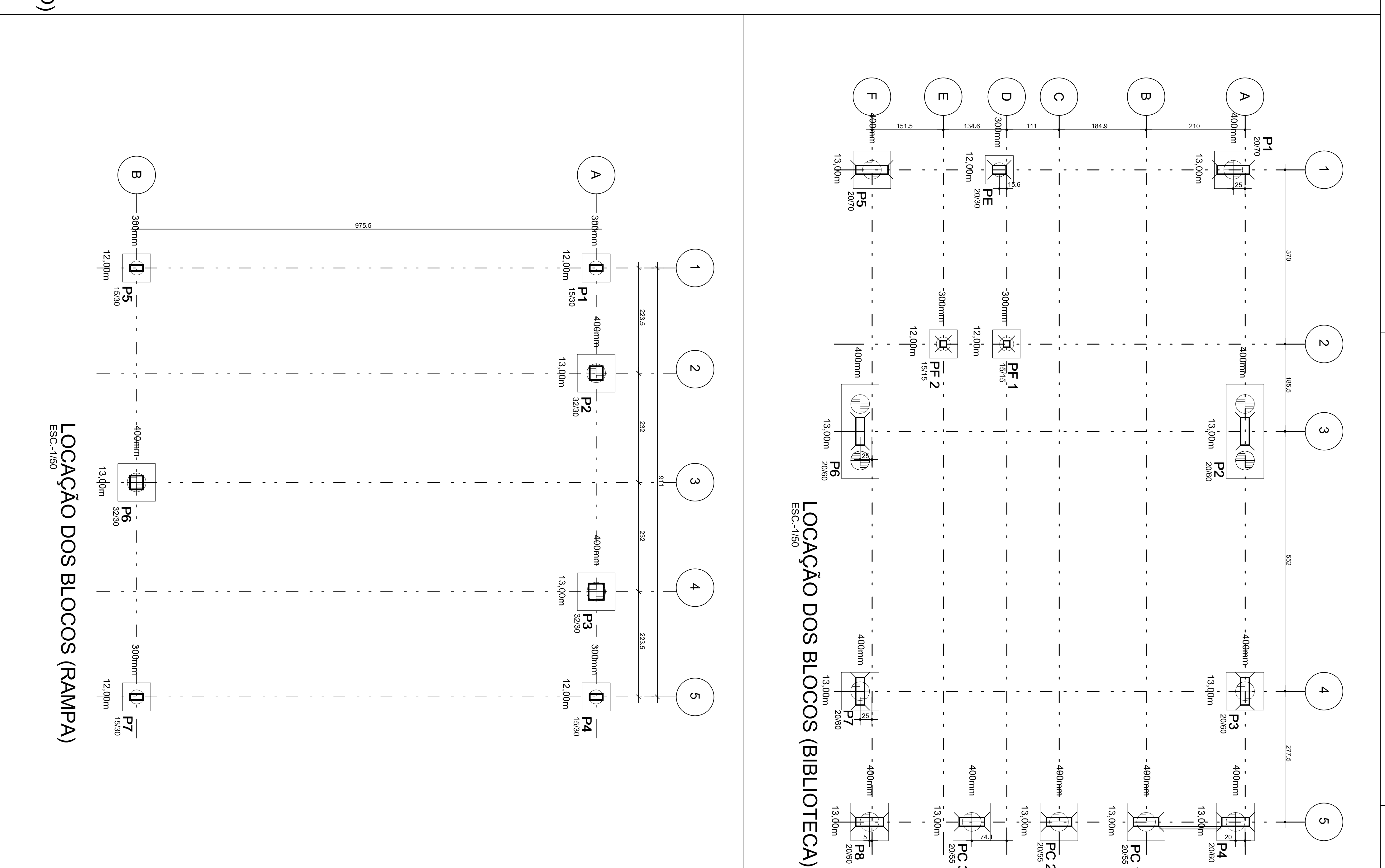
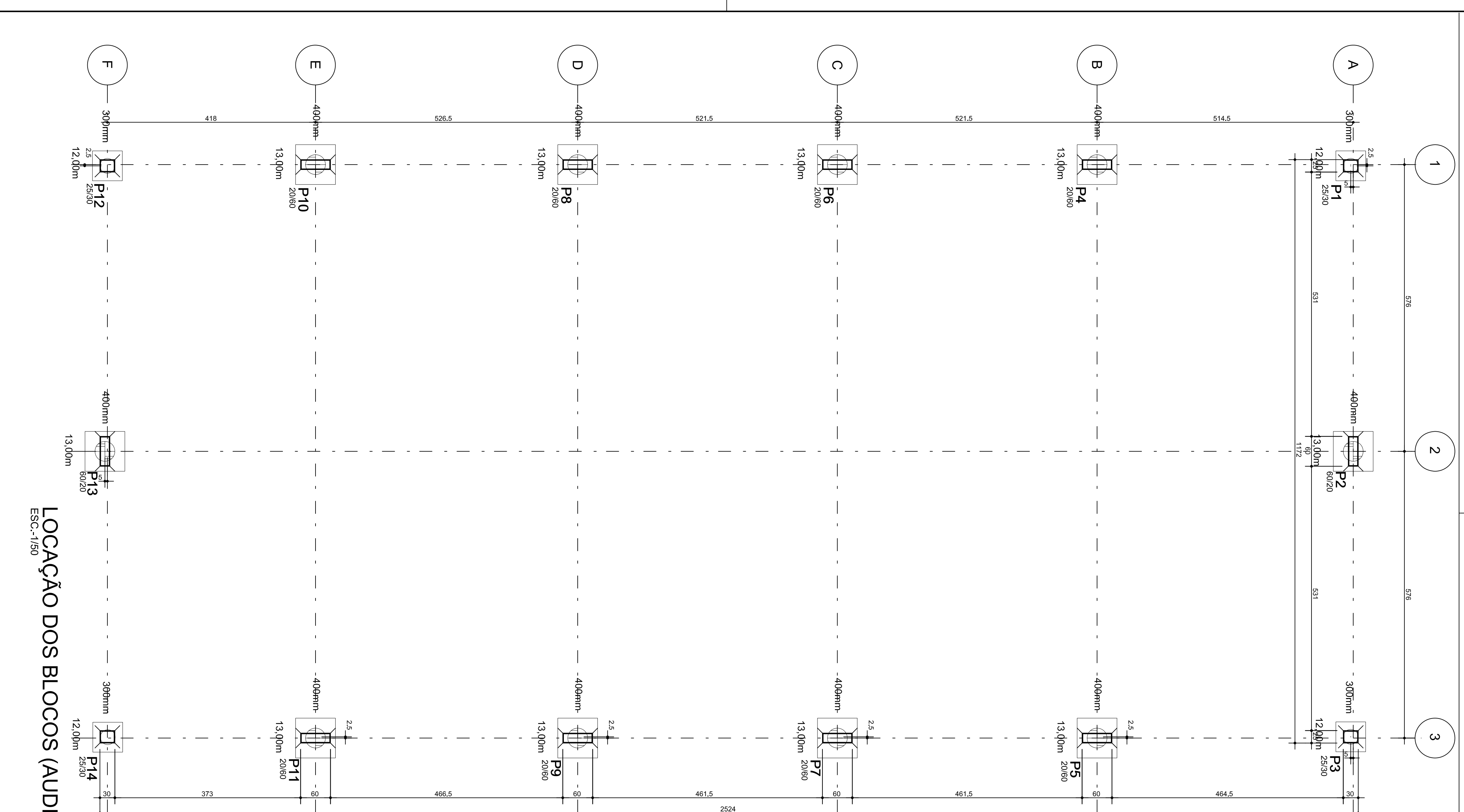


DETALHE DO COROAMENTO



NOTAS:

- LOCAÇÃO DAS ESTACAS PELA PLANTA ORIGINAL DE LOCAÇÃO E CARGA.
- ARGAMASSA TRAÇO = 1:2
- ARGAMASSA ICK = 160 Kg/m²



FADE Fundação Nacional de Educação, Ciência e Tecnologia

Ministério da Educação

PROJETO EXECUTIVO

UNDA UNDA

FU

04/08